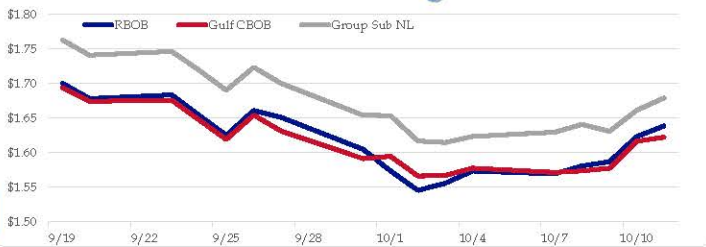


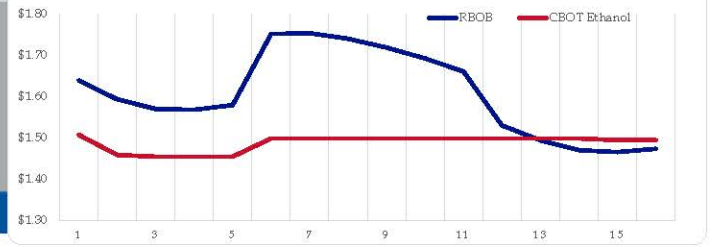
Gasoline

	RBOB	Change	Gulf CBOB	Change	Group Sub NL	Change	Gulf Basis	Group Basis	RBOB Technicals		
10/14	\$1.6146	-\$0.0242	\$1.5979	-\$0.0242	\$1.6556	-\$0.0237	\$ (0.0173)	\$ 0.0407	Indicator	Direction	Resistance 1.7785 Sep High 1.7344 200 Day MA
10/11	\$1.6388	\$0.0155	\$1.6223	\$0.0055	\$1.6793	\$0.0180	\$ (0.0166)	\$ 0.0405	MACD	Bearish	
10/10	\$1.6233	\$0.0362	\$1.6168	\$0.0395	\$1.6613	\$0.0303	\$ (0.0065)	\$ 0.0380	Stochastics	Neutral	
10/9	\$1.5871	\$0.0062	\$1.5773	\$0.0035	\$1.6311	-\$0.0101	\$ (0.0098)	\$ 0.0439	RSI	Neutral	
10/8	\$1.5809	\$0.0115	\$1.5738	\$0.0023	\$1.6411	\$0.0115	\$ (0.0071)	\$ 0.0602	ADX	Neutral	1.5175 Oct Low
10/7	\$1.5694	-\$0.0040	\$1.5715	-\$0.0061	\$1.6296	\$0.0060	\$ 0.0021	\$ 0.0602	Momentum	Neutral	1.4809 Aug Low
10/4	\$1.5734	\$0.0175	\$1.5776	\$0.0105	\$1.6236	\$0.0088	\$ 0.0042	\$ 0.0502	Bias:	Neutral	Support
10/3	\$1.5559	\$0.0104	\$1.5671	\$0.0008	\$1.6149	-\$0.0021	\$ 0.0112	\$ 0.0589			

Gasoline History



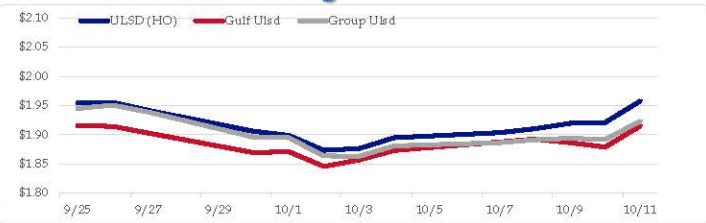
Gasoline Forward Curve



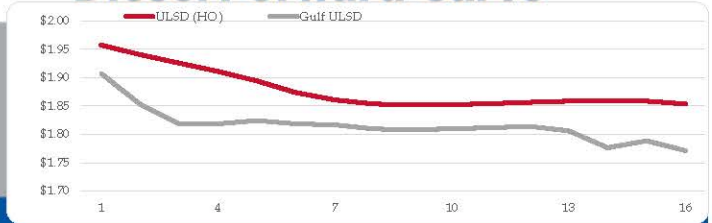
Diesel

	ULSD (HO)	Change	Gulf Ulstd	Change	Group Ulstd	Change	Gulf Basis	Group Basis	HO Technicals		
10/14	\$1.9322	-\$0.0254	\$1.8895	-\$0.0254	\$1.8966	-\$0.0264	\$ (0.0432)	\$ (0.0358)	Indicator	Direction	Resistance 2.1377 2019 High 2.0999 Sep High
10/11	\$1.9576	\$0.0368	\$1.9149	\$0.0263	\$1.9230	\$0.0318	\$ (0.0427)	\$ (0.0346)	MACD	Neutral	
10/10	\$1.9208	\$0.0015	\$1.8786	-\$0.0074	\$1.8912	-\$0.0026	\$ (0.0422)	\$ (0.0296)	Stochastics	Neutral	
10/9	\$1.9193	\$0.0092	\$1.8861	-\$0.0062	\$1.8938	\$0.0029	\$ (0.0333)	\$ (0.0255)	RSI	Neutral	
10/8	\$1.9101	\$0.0068	\$1.8923	\$0.0050	\$1.8910	\$0.0050	\$ (0.0178)	\$ (0.0192)	ADX	Neutral	1.8239 Oct Low
10/7	\$1.9033	\$0.0088	\$1.8873	\$0.0147	\$1.8860	\$0.0055	\$ (0.0160)	\$ (0.0173)	Momentum	Neutral	1.7402 June Low
10/4	\$1.8945	\$0.0185	\$1.8726	\$0.0163	\$1.8805	\$0.0177	\$ (0.0219)	\$ (0.0140)	Bias:	Neutral	Support
10/3	\$1.8760	\$0.0030	\$1.8563	\$0.0110	\$1.8628	-\$0.0006					

Diesel History



Diesel Forward Curve



Crude

	WTI	Change	Brent	Change	Vs WTI				Vs Brent				Group / WCS
10/14	\$53.59	-\$1.11	\$59.34	-\$1.17	Gulf Gas	Gulf Diesel	3/2/1	5/3/2	Gulf Gas	Gulf Diesel	3/2/1	5/3/2	3/2/1
10/11	\$54.70	\$1.15	\$60.51	\$1.41	\$13.43	\$25.73	\$17.53	\$18.35	\$7.62	\$19.92	\$11.72	\$12.54	29.97
10/10	\$53.55	\$0.96	\$59.10	\$0.78	\$14.35	\$25.35	\$18.02	\$18.75	\$8.80	\$19.80	\$12.47	\$13.20	29.02
10/9	\$52.59	-\$0.04	\$58.32	\$0.08	\$13.66	\$26.62	\$17.98	\$18.84	\$7.93	\$20.89	\$12.25	\$13.11	28.21
10/8	\$52.63	-\$0.01	\$58.24	-\$0.11	\$13.47	\$26.84	\$17.93	\$18.82	\$7.86	\$21.23	\$12.32	\$13.21	28.99
	Line 1	Change	Line 2	Change									
CPL space	-0.0108	\$0.0020	-0.0035	-\$0.0003									

Refinery Margins

Diesel Forward Curve

Indicative forward prices for ULSD at Gulf Coast area origin points. Prices are estimates only.

Del. Month	Price	Differential	3 Mo. Avg	6 Mo. Avg
Nov-19	\$1.8533	-\$0.0860		
Dec-19	\$1.8184	-\$0.1060		
Jan-20	\$1.8187	-\$0.0910	\$1.8301	
Feb-20	\$1.8243	-\$0.0685		
Mar-20	\$1.8187	-\$0.0525		
Apr-20	\$1.8169	-\$0.0435	\$1.8200	\$1.8251
May-20	\$1.8097	-\$0.0415		
Jun-20	\$1.8081	-\$0.0425		
Jul-20	\$1.8100	-\$0.0410	\$1.8093	
Aug-20	\$1.8118	-\$0.0380		
Sep-20	\$1.8142	-\$0.0380		
Oct-20	\$1.8063	-\$0.0480	\$1.8108	\$1.8100
12 Month Avg	\$1.8175	-\$0.0580		

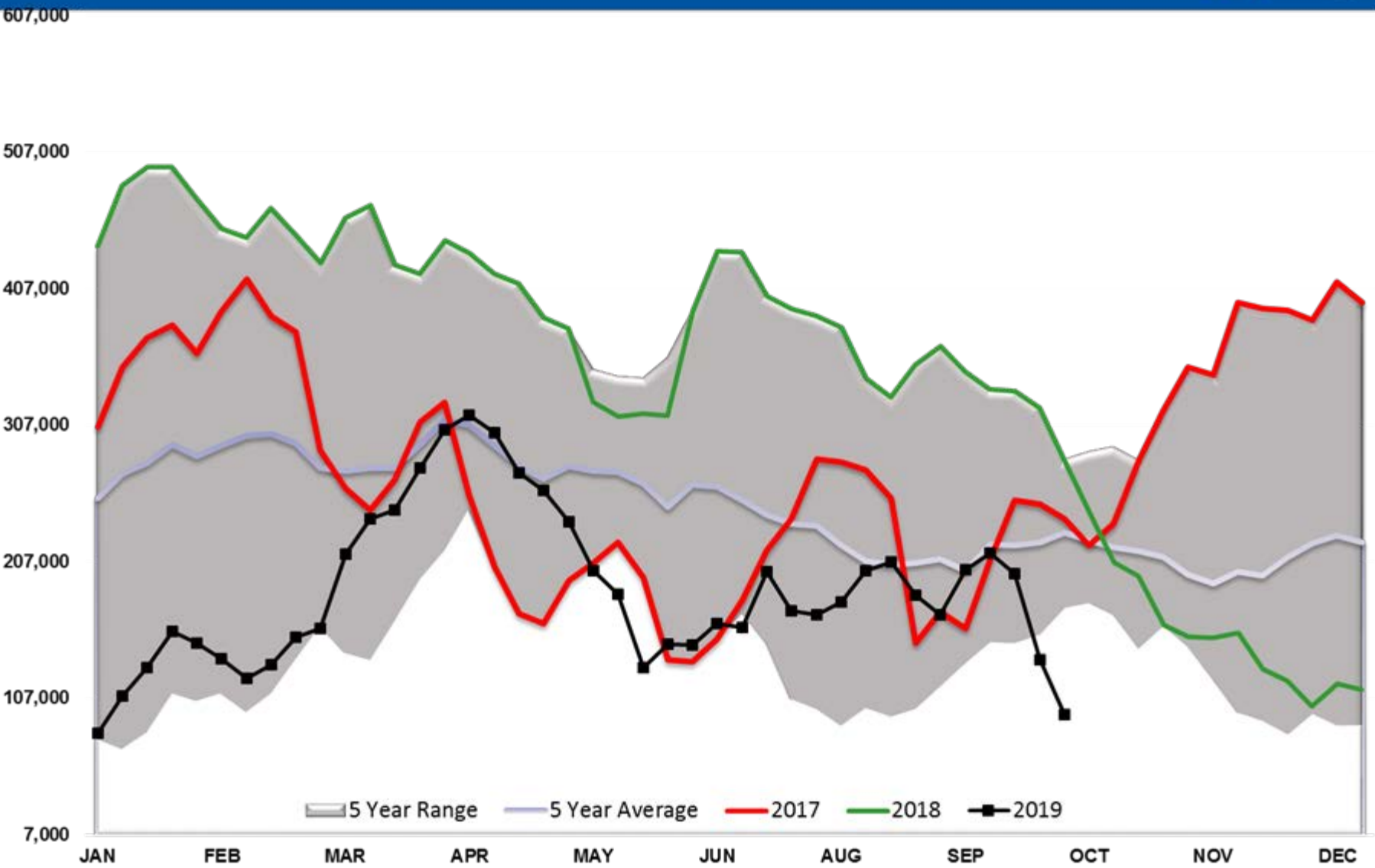
Economic Indicators

Commodity Futures

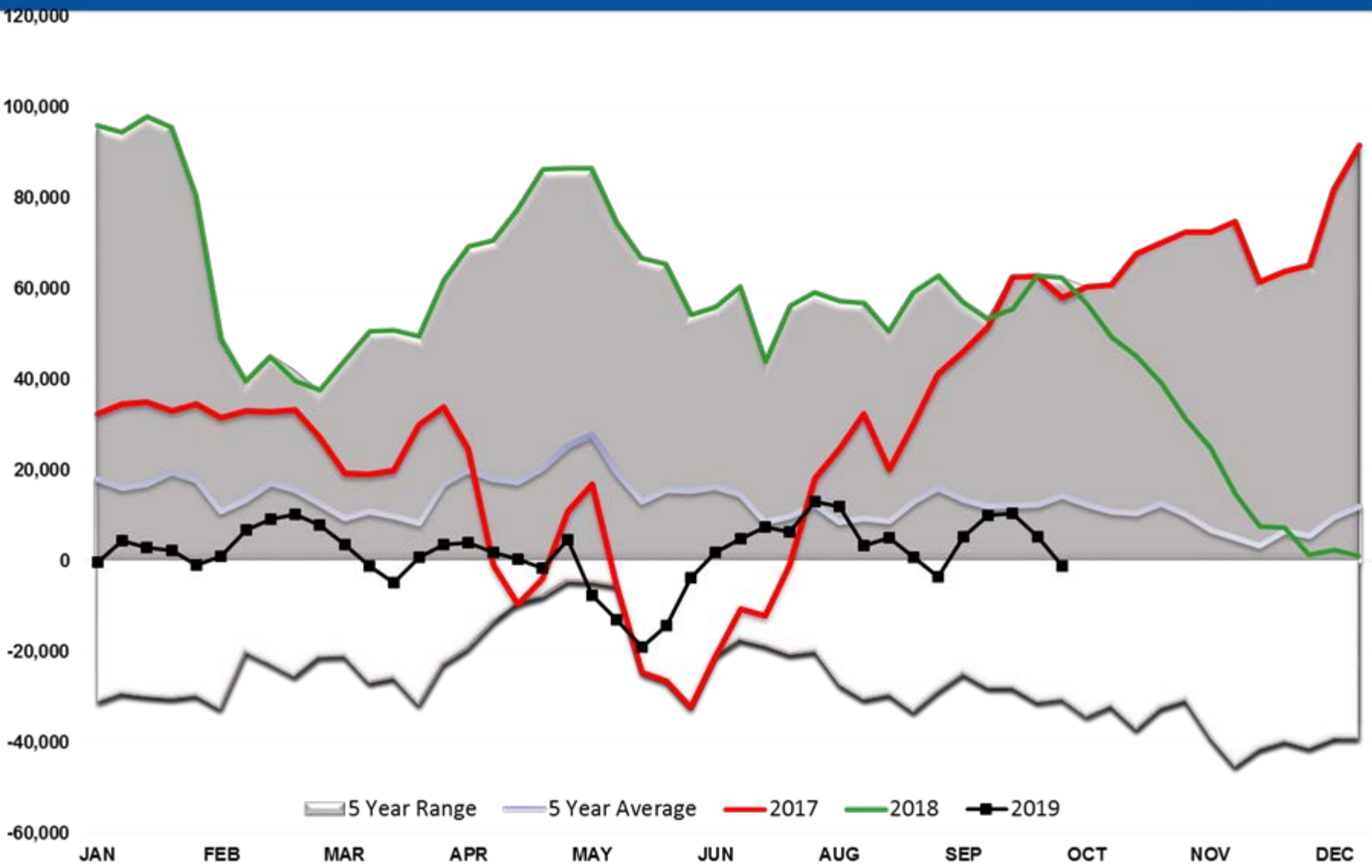
	Settle	Change		Settle	Change
S&P 500	2,971	29.75	Ethanol	1.515	-0.005
DJIA	26,817	319.92	NatGas	2.218	-0.004
			Gold	1.483	10.3
EURUSD	1.1035	0.0026	Silver	17.46	17.46
USD Index	98.01	0.19	Copper	2.62	-0.019
US 10 YR YIELD	1.76%	0.09	FCOJ	97.40	0.20
US 2 YR YIELD	1.63%	0.10	Corn	397.75	-1.50
Oil Volatility Index	39.52	0.13	Soy	936.00	-1.75
S&P Volatility Index (VIX)	18.64	-1.07	Wheat	508.00	2.00
Nikkei 225 Index	22,060	-100.00	Ethanol RINs	0.1728	0.001
			Butane	0.609	0.000
			Propane	0.471	-0.004

*SOURCES: Nymex, CBOT, NYSE, ICE, NASDAQ, CME Group, CBOE. Prices delayed.

WTI Managed Net Position



ULSD Managed Net Position



RBOB Managed Net Position

