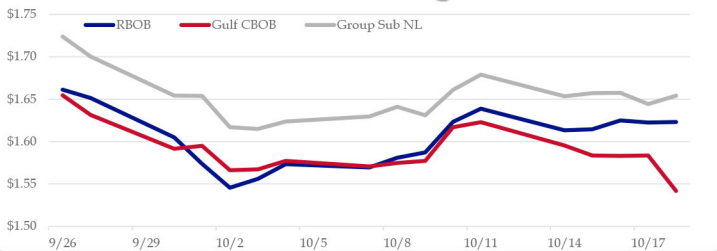


Gasoline

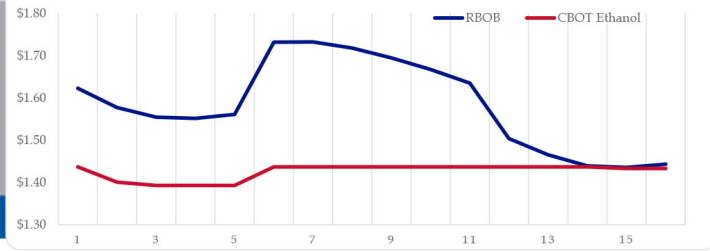
	RBOB	Change	Gulf CBOB	Change	Group Sub NL	Change	Gulf Basis	Group Basis
10/21	\$1.6128	-\$0.0102	\$1.5314	-\$0.0102	\$1.6443	-\$0.0097	\$ (0.0820)	\$ 0.0312
10/18	\$1.6230	\$0.0005	\$1.5418	-\$0.0417	\$1.6540	\$0.0097	\$ (0.0813)	\$ 0.0310
10/17	\$1.6225	-\$0.0023	\$1.5835	\$0.0005	\$1.6443	-\$0.0133	\$ (0.0391)	\$ 0.0217
10/16	\$1.6248	\$0.0104	\$1.5830	-\$0.0005	\$1.6575	\$0.0004	\$ (0.0418)	\$ 0.0327
10/15	\$1.6144	\$0.0012	\$1.5835	-\$0.0117	\$1.6571	\$0.0037	\$ (0.0309)	\$ 0.0427
10/14	\$1.6132	-\$0.0256	\$1.5953	-\$0.0277	\$1.6534	-\$0.0256	\$ (0.0180)	\$ 0.0402
10/11	\$1.6388	\$0.0155	\$1.6230	\$0.0060	\$1.6790	\$0.0180	\$ (0.0159)	\$ 0.0402
10/10	\$1.6233	\$0.0362	\$1.6170	\$0.0399	\$1.6610	\$0.0300	\$ (0.0063)	\$ 0.0377

RBOB Technicals			Resistance	
Indicator	Direction			
MACD	Neutral		1.7785	Sep High
Stochastics	Neutral		1.7467	200 Day MA
RSI	Neutral		1.5175	Oct Low
ADX	Neutral		1.4609	Aug Low
Momentum	Neutral			
Bias:	Neutral			
Support				

Gasoline History



Gasoline Forward Curve

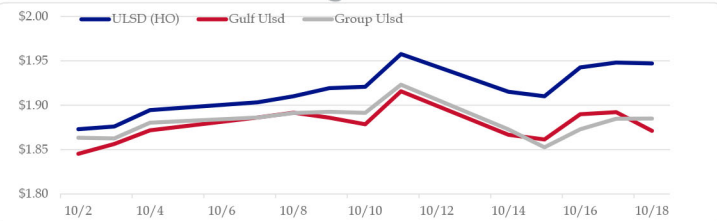


Diesel

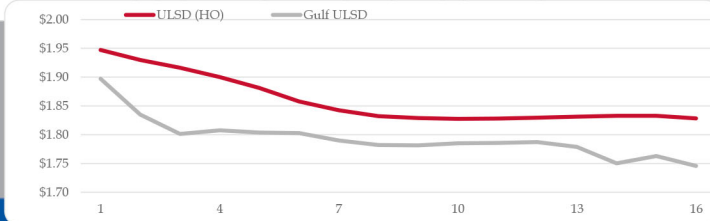
	ULSD (HO)	Change	Gulf Ulstd	Change	Group Ulstd	Change	Gulf Basis	Group Basis
10/21	\$1.9363	-\$0.0108	\$1.8603	-\$0.0108	\$1.8732	-\$0.0118	\$ (0.0765)	\$ (0.0633)
10/18	\$1.9471	-\$0.0010	\$1.8711	-\$0.0311	\$1.8850	\$0.0003	\$ (0.0760)	\$ (0.0621)
10/17	\$1.9481	\$0.0055	\$1.8922	\$0.0023	\$1.8848	\$0.0119	\$ (0.0559)	\$ (0.0634)
10/16	\$1.9426	\$0.0326	\$1.8899	\$0.0285	\$1.8729	\$0.0203	\$ (0.0528)	\$ (0.0698)
10/15	\$1.9100	-\$0.0051	\$1.8614	-\$0.0052	\$1.8526	-\$0.0202	\$ (0.0486)	\$ (0.0574)
10/14	\$1.9151	-\$0.0425	\$1.8666	-\$0.0491	\$1.8728	-\$0.0503	\$ (0.0485)	\$ (0.0423)
10/11	\$1.9576	\$0.0368	\$1.9157	\$0.0371	\$1.9231	\$0.0318	\$ (0.0419)	\$ (0.0345)
10/10	\$1.9208	\$0.0015	\$1.8786	-\$0.0072	\$1.8913	-\$0.0013		

HO Technicals			Resistance	
Indicator	Direction			
MACD	Neutral		2.1377	2019 High
Stochastics	Neutral		2.0999	Sep High
RSI	Neutral		1.8239	Oct Low
ADX	Neutral		1.7402	June Low
Momentum	Neutral			
Bias:	Neutral			
Support				

Diesel History



Diesel Forward Curve



Crude

	WTI	Change	Brent	Change
10/21	\$53.58	-\$0.20	\$59.02	-\$0.40
10/18	\$53.78	-\$0.15	\$59.42	-\$0.49
10/17	\$53.93	\$0.57	\$59.91	\$0.49
10/16	\$53.36	\$0.55	\$59.42	\$0.68
10/15	\$52.81	\$0.22	\$58.74	-\$0.61
	Line 1	Change	Line 2	Change
CPL space	0.0045	\$0.0223	\$0.0103	\$0.0141

Refinery Margins

		Vs WTI		Vs Brent		Group / WCS
		Gulf Gas	Gulf Diesel	3/2/1	5/3/2	
10/21	\$53.58	\$10.97	\$24.81	\$15.58	\$16.51	
10/18	\$53.78	\$10.97	\$24.81	\$15.58	\$16.51	29.74
10/17	\$53.93	\$12.57	\$25.54	\$16.90	\$17.76	29.47
10/16	\$53.36	\$13.13	\$26.01	\$17.42	\$18.28	29.67
10/15	\$52.81	\$13.70	\$25.37	\$17.59	\$18.37	29.92

Diesel Forward Curve

Indicative forward prices for ULSD at Gulf Coast area origin points. Prices are estimates only.

Del. Month	Price	Differential	3 Mo. Avg	6 Mo. Avg
Nov-19	\$1.8348	-\$0.0935		
Dec-19	\$1.8013	-\$0.1135		
Jan-20	\$1.8076	-\$0.0910	\$1.8146	
Feb-20	\$1.8037	-\$0.0760		
Mar-20	\$1.8028	-\$0.0525		
Apr-20	\$1.7899	-\$0.0520	\$1.7988	\$1.8067
May-20	\$1.7822	-\$0.0475		
Jun-20	\$1.7815	-\$0.0460		
Jul-20	\$1.7850	-\$0.0410	\$1.7829	
Aug-20	\$1.7856	-\$0.0380		
Sep-20	\$1.7871	-\$0.0380		
Oct-20	\$1.7788	-\$0.0480	\$1.7838	\$1.7834
12 Month Avg	\$1.7950	-\$0.0614		

Economic Indicators

Commodity Futures

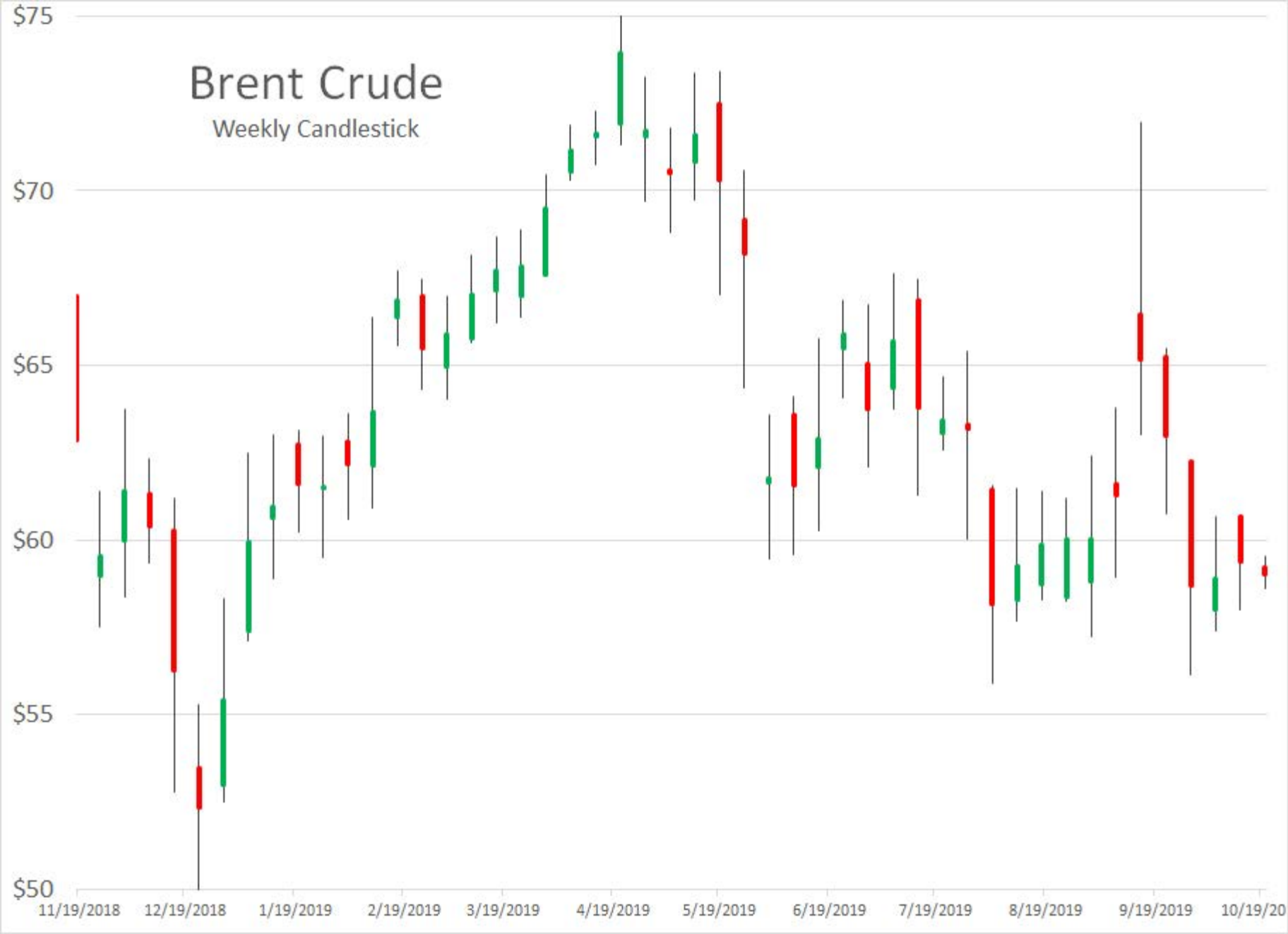
	Settle	Change		Settle	Change
S&P 500	2,988	-9.75	Ethanol	1.417	-0.005
DJIA	26,770	-255.68	NatGas	2.320	0.002
			Gold	1,488	0.2
			Silver	17.50	17.50
EUR/USD	1.1147	0.0041	Copper	2.63	0.002
USD Index	97.01	-0.07	FCOJ	99.35	0.00
US 10 YR YIELD	1.76%	0.00	Corn	391.00	2.00
US 2 YR YIELD	1.58%	-0.02	Soy	934.00	4.25
Oil Volatility Index	37.71	-1.28	Wheat	532.25	2.25
S&P Volatility Index (VIX)	13.79	0.46	Ethanol RINs	0.1515	-0.003
Nikkei 225 Index	22,505	145.00	Butane	0.613	0.000
			Propane	0.463	-0.002

*SOURCES: Nymex, CBOT, NYSE, ICE, NASDAQ, CME Group, CBOE. Prices delayed.

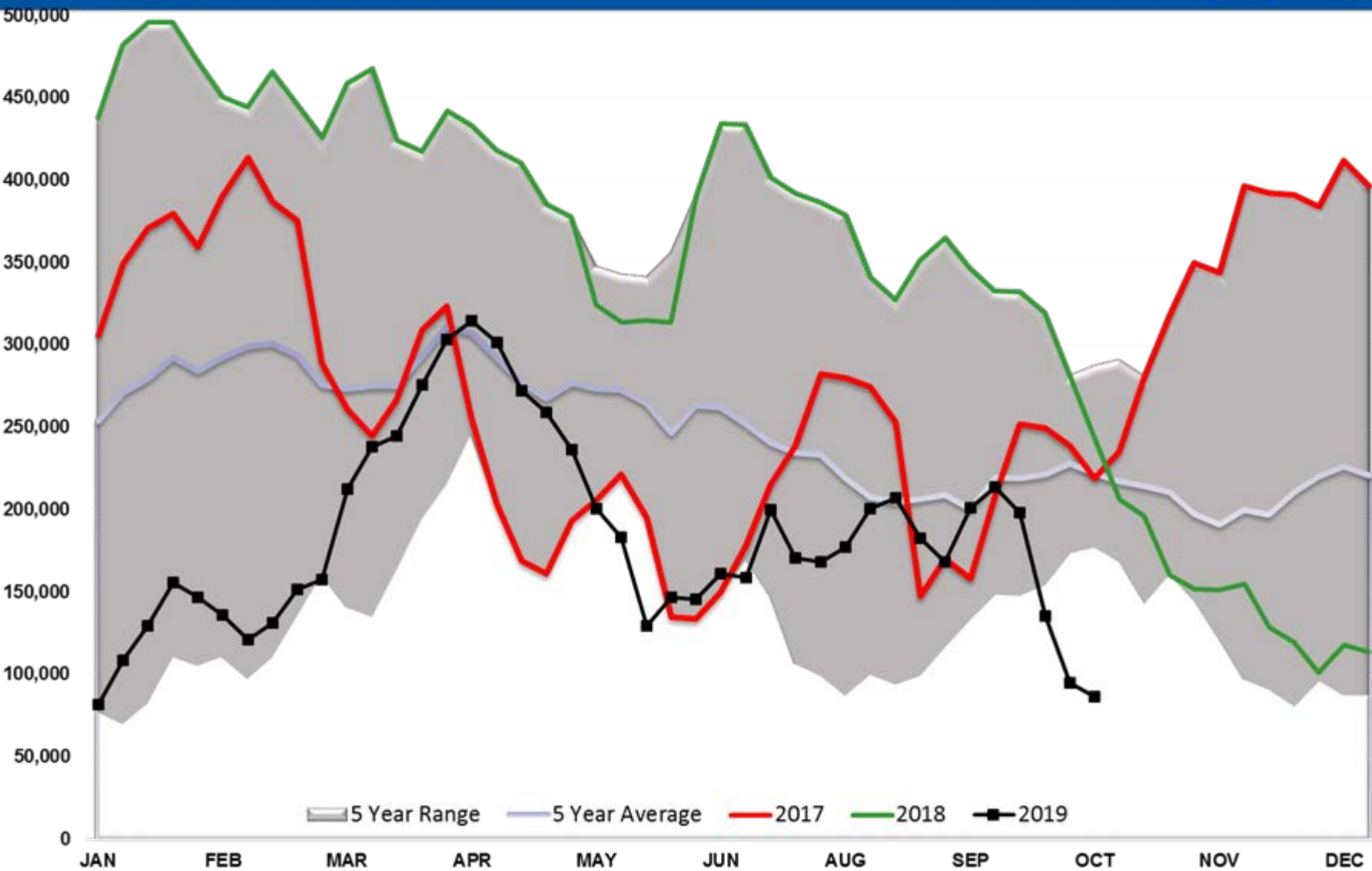
Disclaimer: The information contained herein is derived from multiple sources believed to be reliable. However, this information is not guaranteed as to its accuracy or completeness. No responsibility is assumed for use of this material and no express or implied warranties or guarantees are made. This material and any view or comment expressed herein are provided for informational purposes only and should not be construed in any way as an inducement or recommendation to buy or sell products, commodity futures or options contracts.

Brent Crude

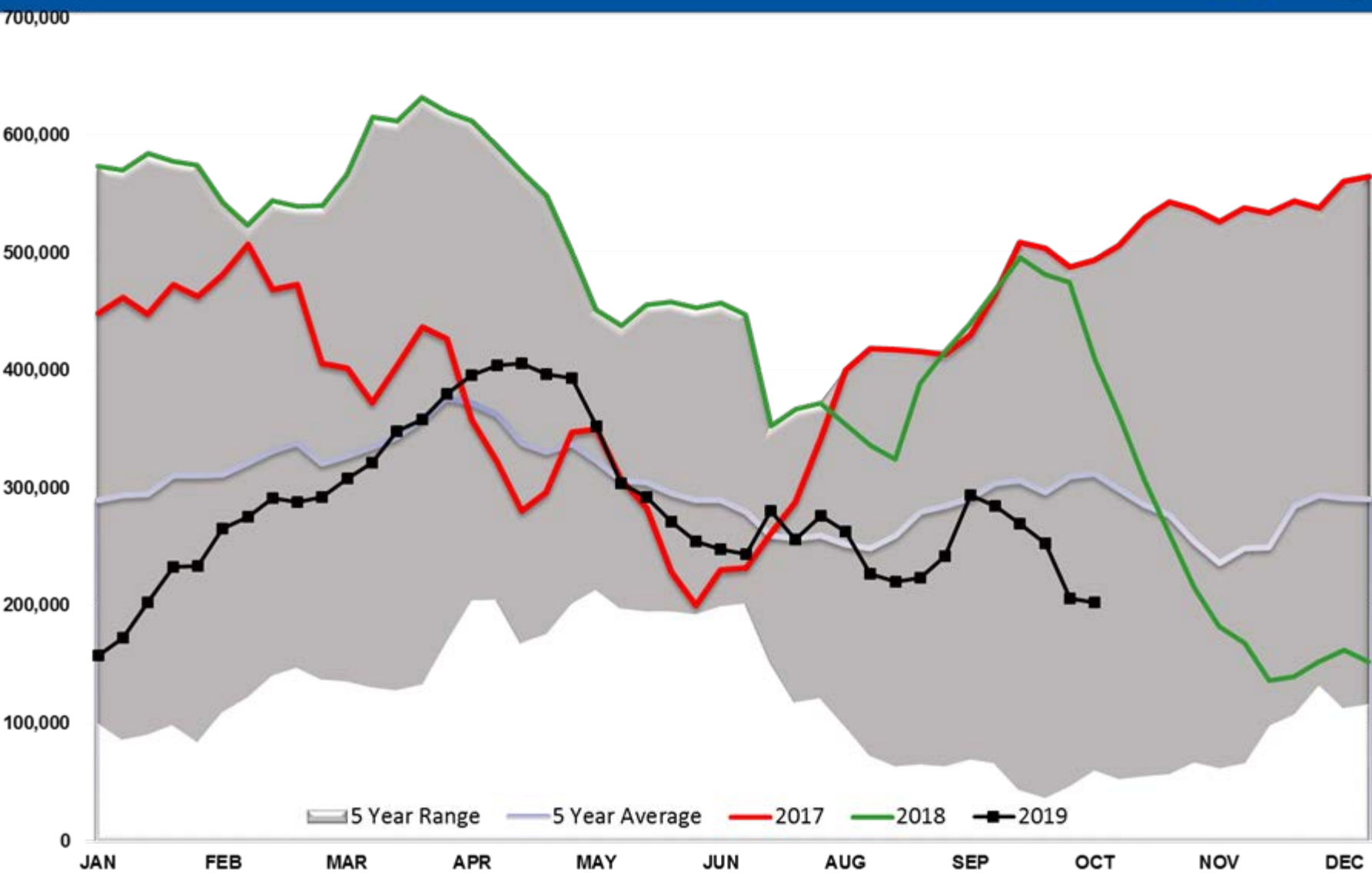
Weekly Candlestick



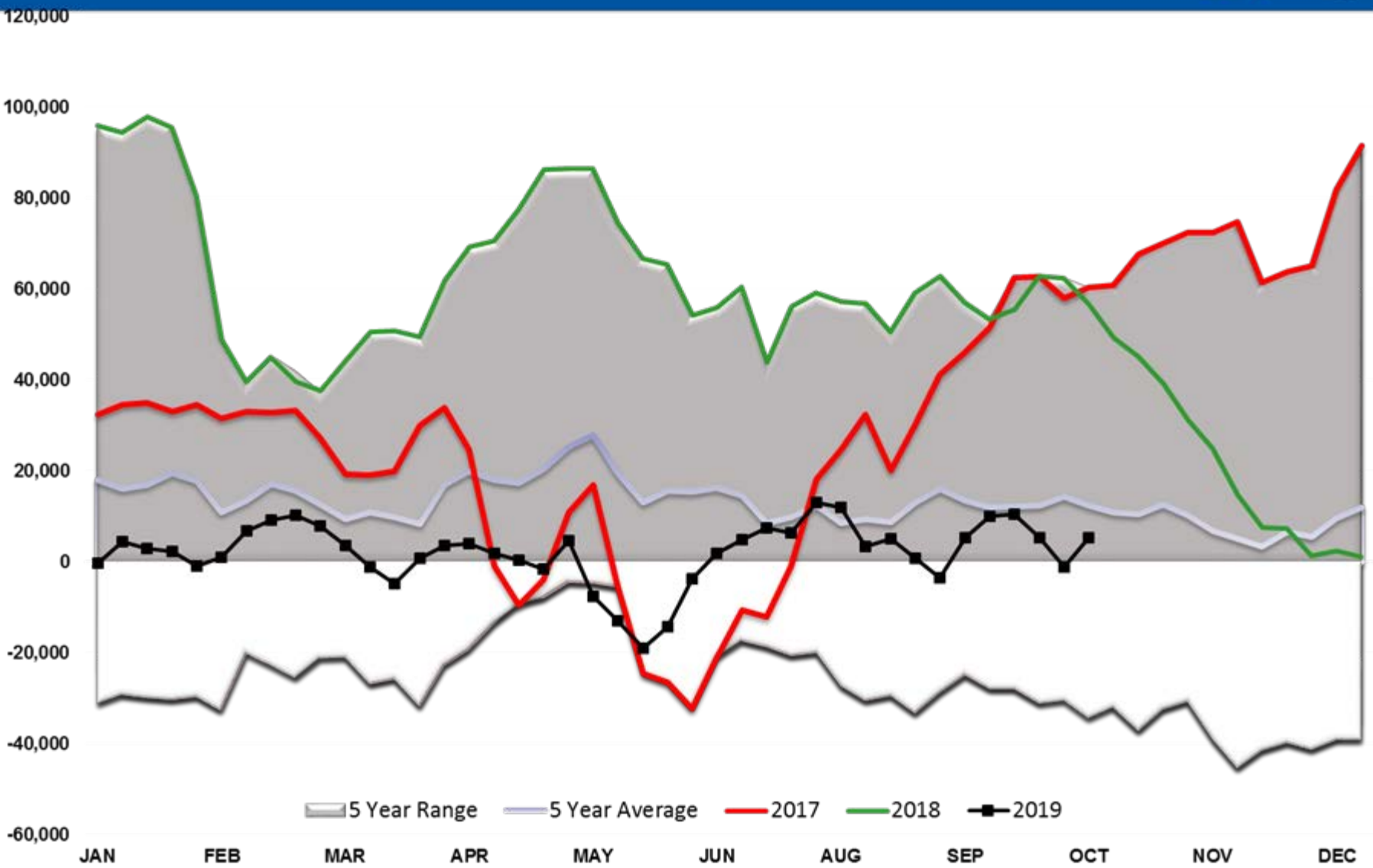
WTI Managed Net Position



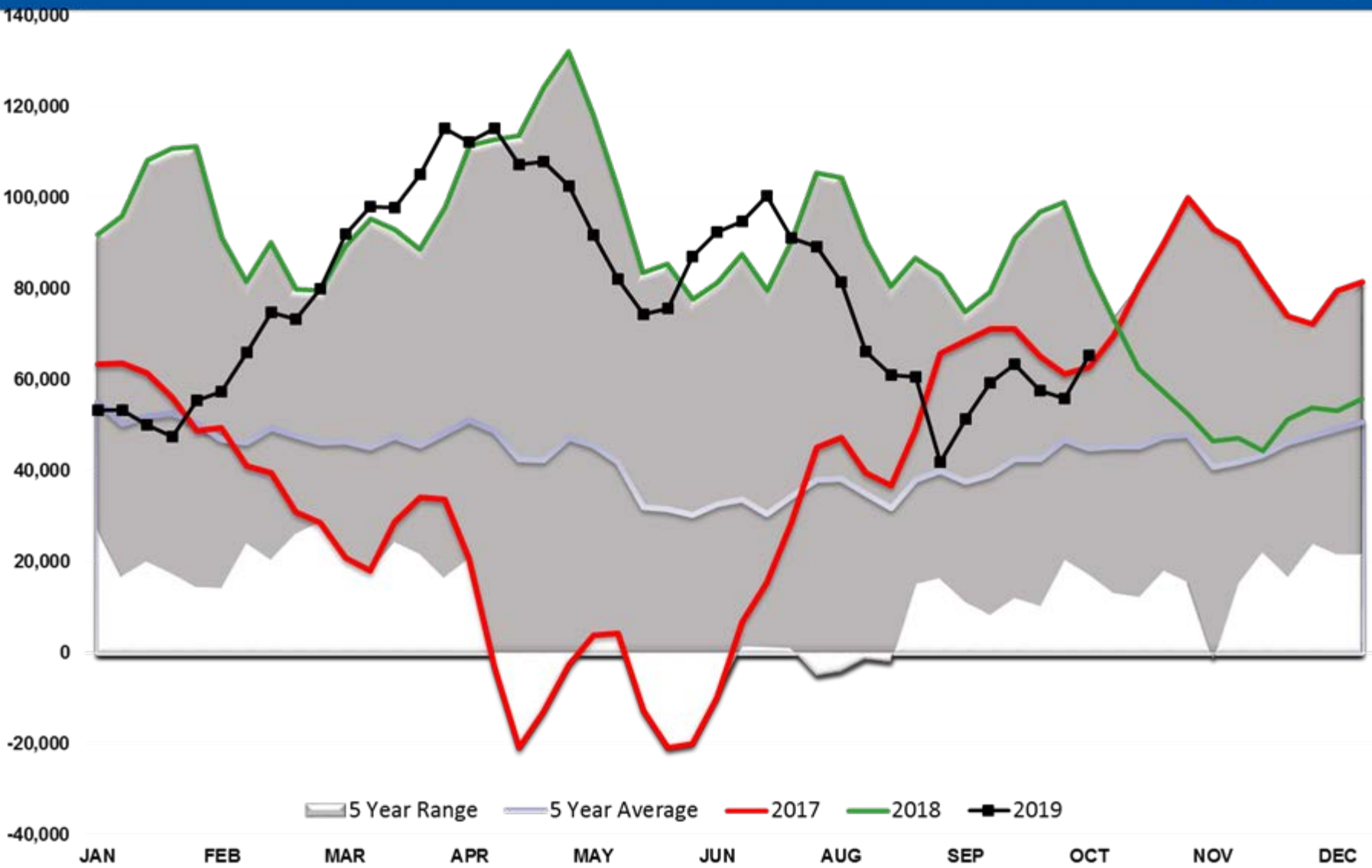
Brent Managed Net Position



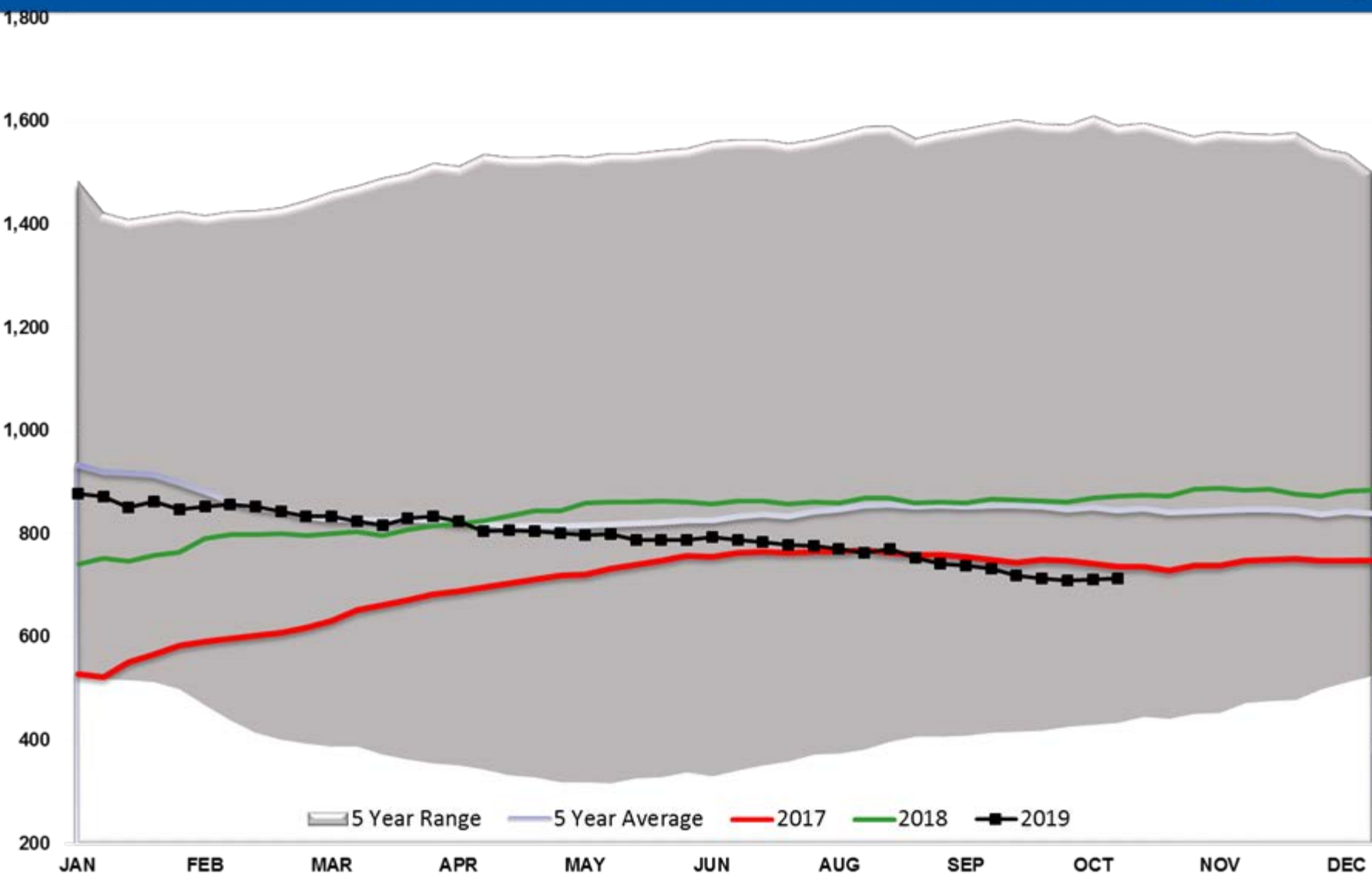
ULSD Managed Net Position



RBOB Managed Net Position



Baker Hughes - Total US Oil Rigs



Current Year RIN Values

