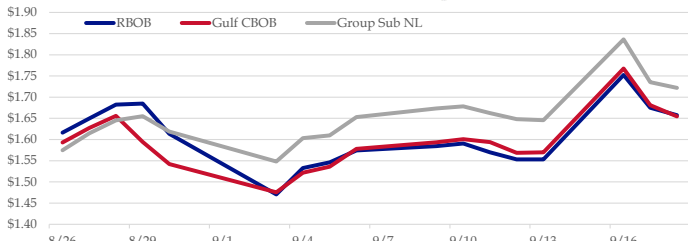


## Gasoline

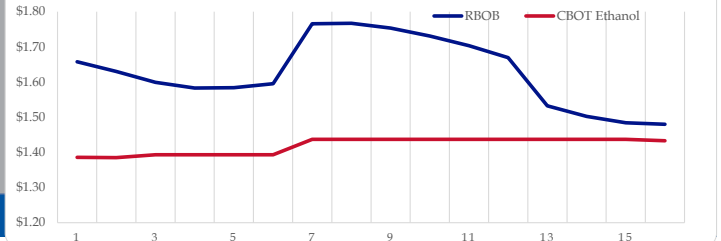
	RBOB	Change	Gulf CBOB	Change	Group Sub NL	Change	Gulf Basis	Group Basis
9/19	\$1.7056	\$0.0479	\$1.7025	\$0.0479	\$1.7704	\$0.0484	\$ (0.0036)	\$ 0.0644
9/18	\$1.6577	-\$0.0174	\$1.6548	-\$0.0262	\$1.7220	-\$0.0137	\$ (0.0029)	\$ 0.0642
9/17	\$1.6751	-\$0.0773	\$1.6811	-\$0.0866	\$1.7356	-\$0.1008	\$ 0.0059	\$ 0.0605
9/16	\$1.7524	\$0.1993	\$1.7676	\$0.1979	\$1.8364	\$0.1906	\$ 0.0152	\$ 0.0840
9/13	\$1.5531	\$0.0001	\$1.5697	\$0.0009	\$1.6458	-\$0.0024	\$ 0.0166	\$ 0.0927
9/12	\$1.5530	-\$0.0169	\$1.5688	-\$0.0253	\$1.6482	-\$0.0144	\$ 0.0158	\$ 0.0952
9/11	\$1.5699	-\$0.0209	\$1.5941	-\$0.0067	\$1.6626	-\$0.0159	\$ 0.0241	\$ 0.0927
9/10	\$1.5908	\$0.0062	\$1.6007	\$0.0073	\$1.6785	\$0.0050	\$ 0.0099	\$ 0.0877

RBOB Technicals			Resistance	
Indicator	Direction			
MACD	Topping	1.7533	Sep High	
Stochastics	Neutral	1.7169	200 Day MA	
RSI	Neutral	1.4609	Aug Low	
ADX	Neutral	1.3749	Feb Low	
Momentum	Neutral			
Bias:	Neutral			
Support				

## Gasoline History



## Gasoline Forward Curve

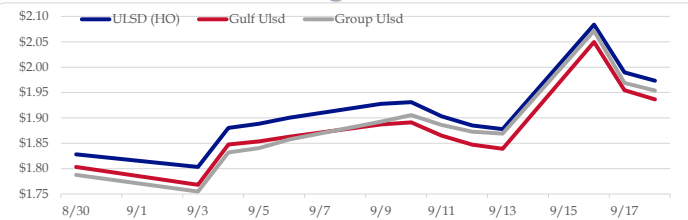


## Diesel

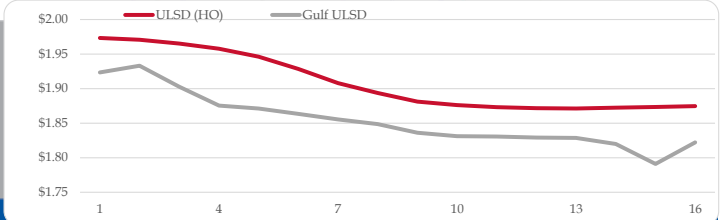
	ULSD (HO)	Change	Gulf Ulstd	Change	Group Ulstd	Change	Gulf Basis	Group Basis
9/19	\$2.0160	\$0.0427	\$1.9793	\$0.0427	\$1.9954	\$0.0417	\$ (0.0372)	\$ (0.0208)
9/18	\$1.9733	-\$0.0163	\$1.9366	-\$0.0278	\$1.9537	-\$0.0151	\$ (0.0367)	\$ (0.0196)
9/17	\$1.9896	-\$0.0942	\$1.9544	-\$0.0952	\$1.9688	-\$0.1028	\$ (0.0352)	\$ (0.0209)
9/16	\$2.0838	\$0.2060	\$2.0496	\$0.2104	\$2.0716	\$0.2024	\$ (0.0343)	\$ (0.0122)
9/13	\$1.8778	-\$0.0073	\$1.8392	-\$0.0082	\$1.8692	-\$0.0036	\$ (0.0386)	\$ (0.0086)
9/12	\$1.8851	-\$0.0181	\$1.8474	-\$0.0177	\$1.8728	-\$0.0134	\$ (0.0378)	\$ (0.0123)
9/11	\$1.9032	-\$0.0280	\$1.8651	-\$0.0262	\$1.8862	-\$0.0193	\$ (0.0381)	\$ (0.0170)
9/10	\$1.9312	\$0.0035	\$1.8913	\$0.0042	\$1.9055	\$0.0129		

HO Technicals			Resistance	
Indicator	Direction			
MACD	Neutral	2.1377	2019 High	
Stochastics	Neutral	2.0800	Sep High	
RSI	Neutral	1.7402	June Low	
ADX	Neutral	1.6424	Jan Low	
Momentum	Neutral			
Bias:	Neutral			
Support				

## Diesel History



## Diesel Forward Curve



## Crude

	WTI	Change	Brent	Change	Vs WTI				Vs Brent				Group / WCS
9/19	\$59.16	\$1.05	\$65.33	\$1.73	Gulf Gas	Gulf Diesel	3/2/1	5/3/2	Gulf Gas	Gulf Diesel	3/2/1	5/3/2	3/2/1
9/18	\$58.11	-\$1.23	\$63.60	-\$0.95	\$11.39	\$23.23	\$15.34	\$16.13	\$5.90	\$17.74	\$9.85	\$10.64	24.77
9/17	\$59.34	-\$3.56	\$64.55	-\$4.47	\$11.26	\$22.74	\$15.09	\$15.86	\$6.05	\$17.53	\$9.88	\$10.65	25.36
9/16	\$62.90	\$8.05	\$69.02	\$8.80	\$11.34	\$23.18	\$15.29	\$16.08	\$5.22	\$17.06	\$9.17	\$9.96	29.62
9/13	\$54.85	-\$3.00	\$60.22	-\$0.16	\$11.08	\$22.40	\$14.85	\$15.61	\$5.71	\$17.03	\$9.48	\$10.24	16.98
Line 1		Change	Line 2										
CPL space		-0.0195	\$0.0045		-\$0.0085				-\$0.0028				

## Refinery Margins

## Diesel Forward Curve

Indicative forward prices for ULSD at Gulf Coast area origin points. Prices are estimates only.

Del. Month	Price	Differential	3 Mo. Avg	6 Mo. Avg
Oct-19	\$1.9331	-\$0.0360		
Nov-19	\$1.9026	-\$0.0610		
Dec-19	\$1.8753	-\$0.0810	\$1.9037	
Jan-20	\$1.8711	-\$0.0735		
Feb-20	\$1.8635	-\$0.0625		
Mar-20	\$1.8554	-\$0.0520	\$1.8633	\$1.8835
Apr-20	\$1.8486	-\$0.0425		
May-20	\$1.8362	-\$0.0435		
Jun-20	\$1.8312	-\$0.0435	\$1.8387	
Jul-20	\$1.8306	-\$0.0380		
Aug-20	\$1.8291	-\$0.0380		
Sep-20	\$1.8287	-\$0.0380	\$1.8295	\$1.8341
12 Month Avg	\$1.8588	-\$0.0508		

## Economic Indicators

## Commodity Futures

	Settle	Change		Settle	Change
S&P 500	3,006	0.75	Ethanol	1.386	-0.005
DJIA	27,111	36.28	NatGas	2.637	-0.031
			Gold	1,508	-11.4
			Silver	17.80	17.80
EUR/USD	1.1054	0.0035	Copper	2.60	0.001
USD Index	98.13	-0.26	FCOJ	99.10	0.05
US 10 YR YIELD	1.80%	-0.01	Corn	371.25	-0.25
US 2 YR YIELD	1.77%	0.05	Soy	888.75	-0.25
Oil Volatility Index	44.89	-4.45	Wheat	489.50	0.00
S&P Volatility Index (VIX)	14.44	-0.49	Ethanol RINs	0.2465	0.00
Nikkei 225 Index	21,945	0.00	Butane	0.545	-0.008
			Propane	0.444	-0.017

\*SOURCES: Nymex, CBOT, NYSE, ICE, NASDAQ, CME Group, CBOE. Prices delayed.

Disclaimer: The information contained herein is derived from multiple sources believed to be reliable. However, this information is not guaranteed as to its accuracy or completeness. No responsibility is assumed for use of this material and no express or implied warranties or guarantees are made. This material and any view or comment expressed herein are provided for informational purposes only and should not be construed in any way as an inducement or recommendation to buy or sell products, commodity futures or options contracts.

# TS Imelda - Refineries at risk

Region	Refinery Name	Name Plate Capacity (MB/DAY)
Pt Arthur/Beaumont	Motiva Pt Arthur	635
Pt Arthur/Beaumont	Exxon Beaumont	377
Pt Arthur/Beaumont	Total Pt Arthur	245
Pt Arthur/Beaumont	Valero Pt Arthur	415
	Total Capacity at Risk	1672
	US Total	18,500
	Total % at risk	9.04%

Central Pacific

Eastern North Pacific

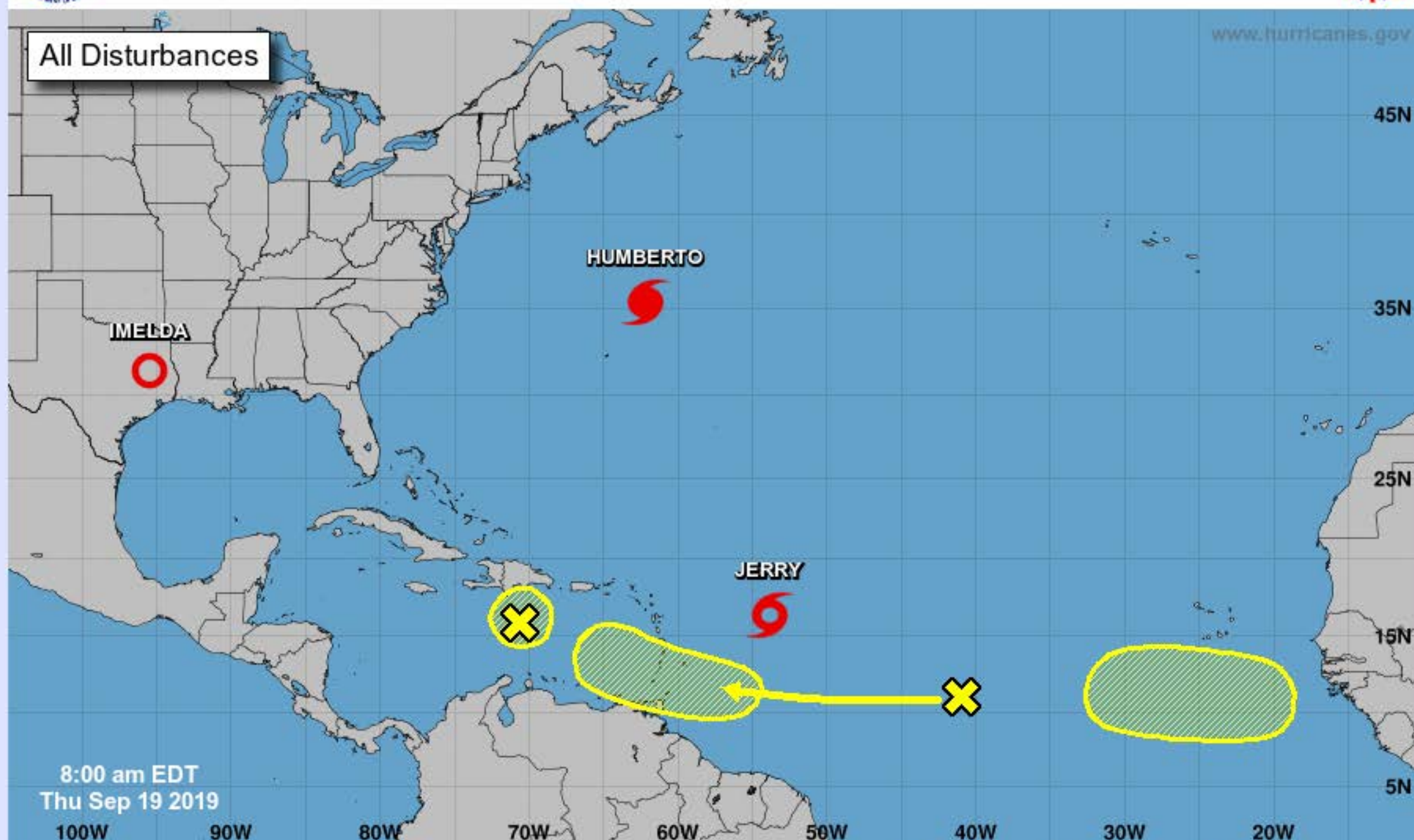
Atlantic

Disturbances: [ALL](#) [\[1\]](#) [\[2\]](#) [\[3\]](#)



# Five-Day Graphical Tropical Weather Outlook

National Hurricane Center Miami, Florida



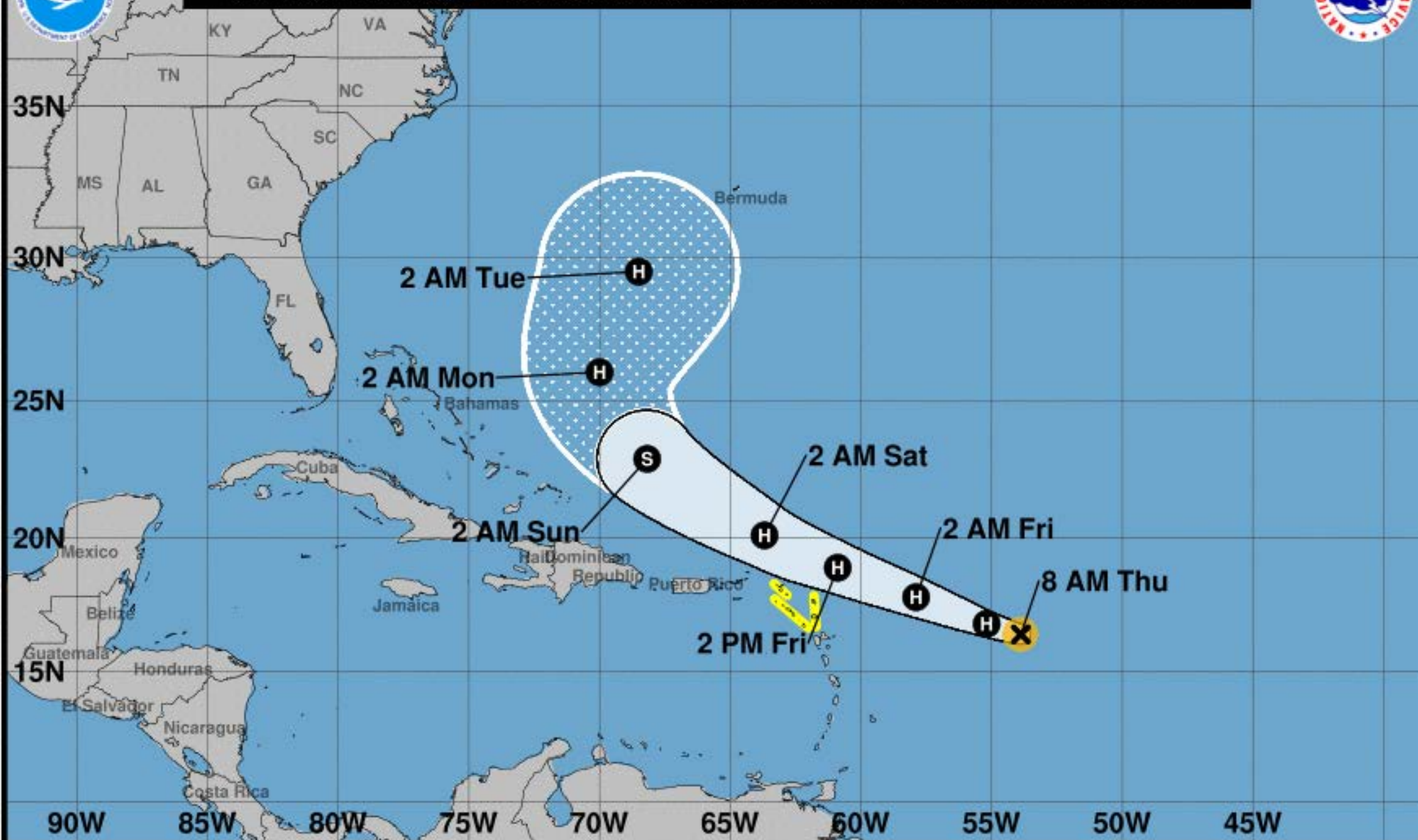
8:00 am EDT  
Thu Sep 19 2019

Current Disturbances and Five-Day Cyclone Formation Chance:   
 Tropical or Sub-Tropical Cyclone:   
 ○ Depression    ⚡ Storm    ⚡ Hurricane  
 ⊗ Post-Tropical Cyclone or Remnants

[View 2-Day Graphical Tropical Weather Outlook](#)



**Note: The cone contains the probable path of the storm center but does not show the size of the storm. Hazardous conditions can occur outside of the cone.**



### Tropical Storm Jerry

Thursday September 19, 2019

8 AM AST Intermediate Advisory 8A

NWS National Hurricane Center

### Current information: x

Center location 16.4 N 53.9 W

Maximum sustained wind 70 mph

Movement WNW at 16 mph

### Forecast positions:

● Tropical Cyclone ○ Post/Potential TC

Sustained winds: D < 39 mph

S 39-73 mph H 74-110 mph M > 110 mph

### Potential track area:

Day 1-3 Day 4-5

### Watches:

Hurricane Trop Stm

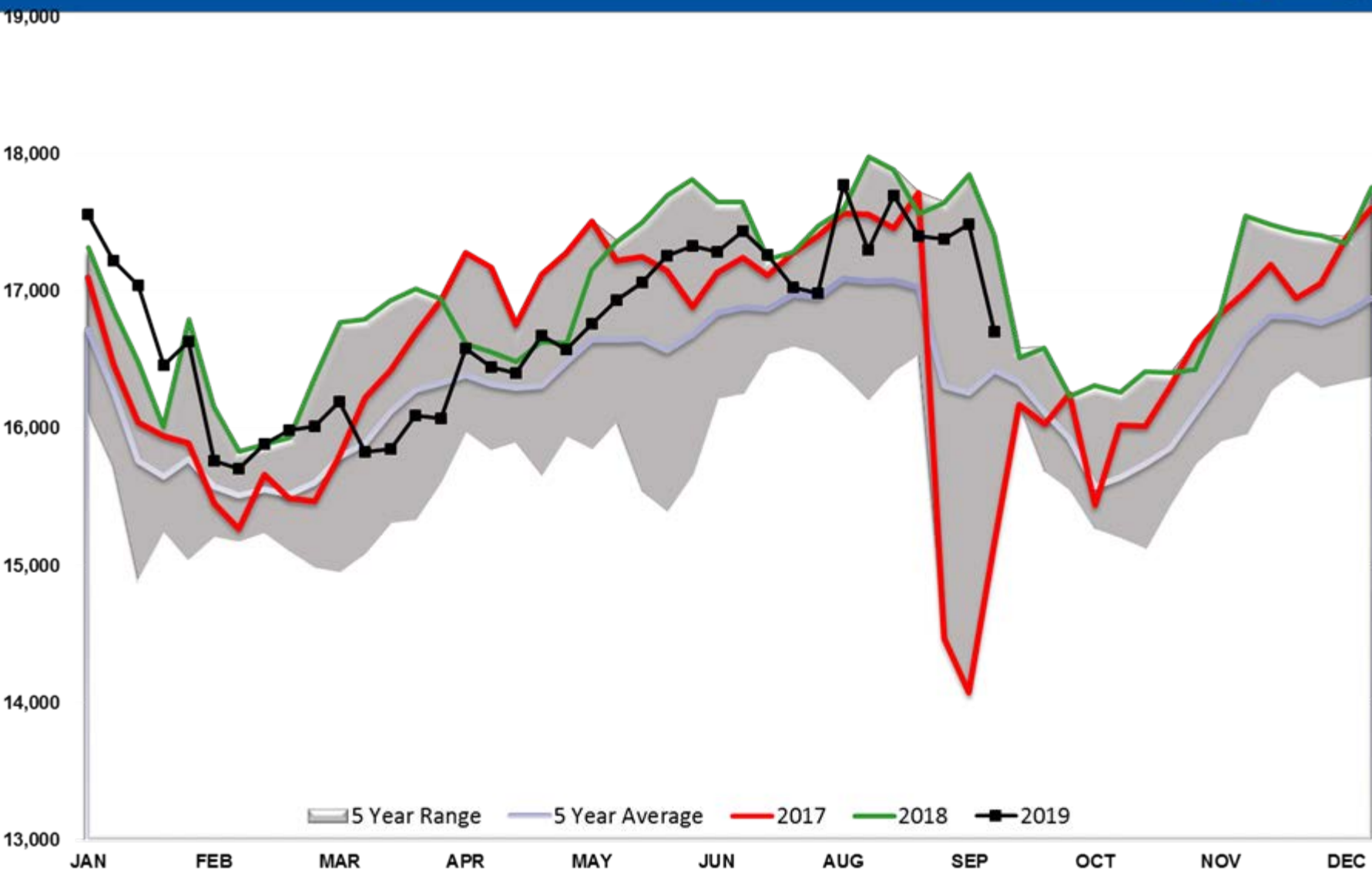
### Warnings:

Hurricane Trop Stm

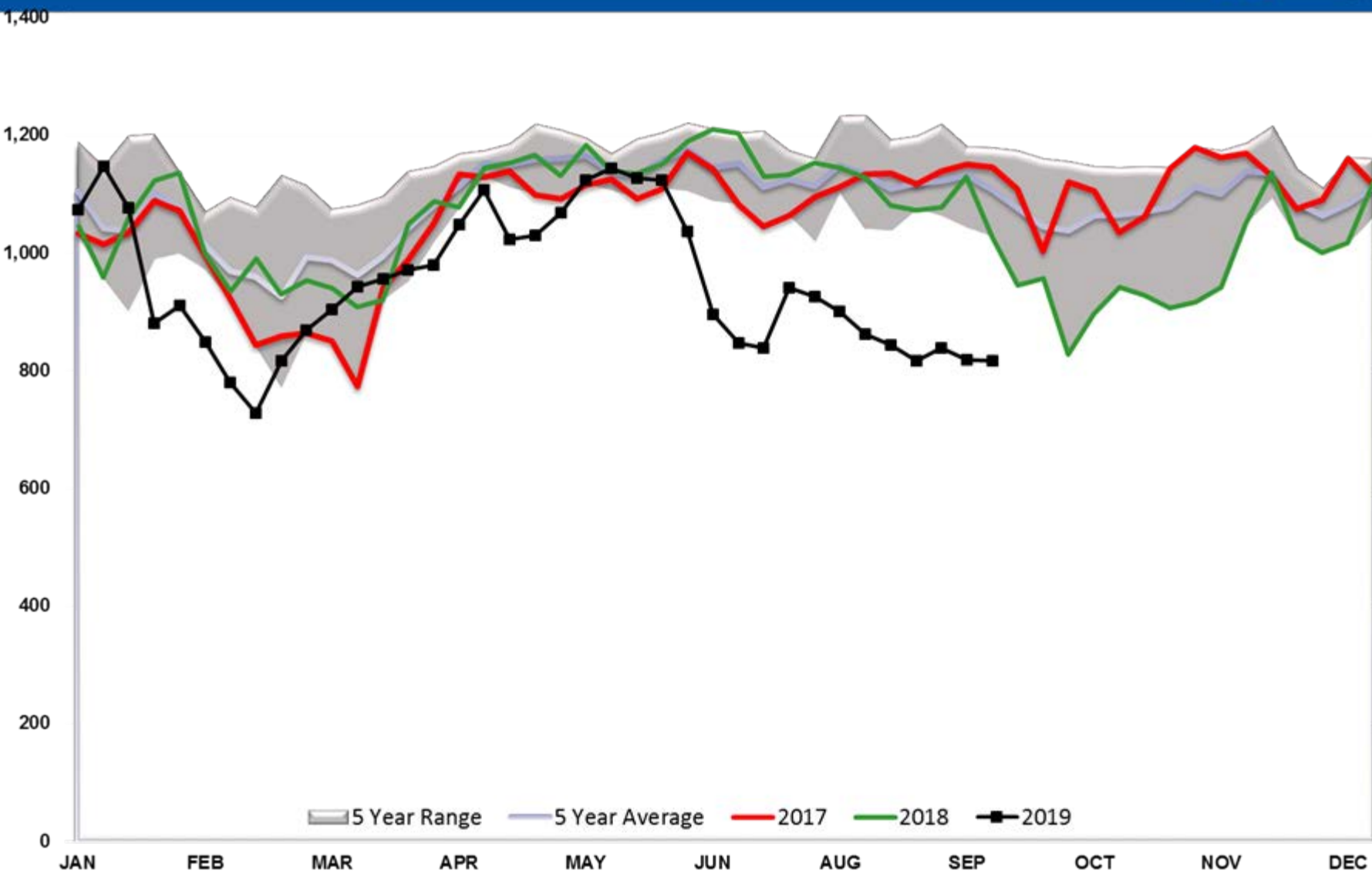
### Current wind extent:

Hurricane Trop Stm

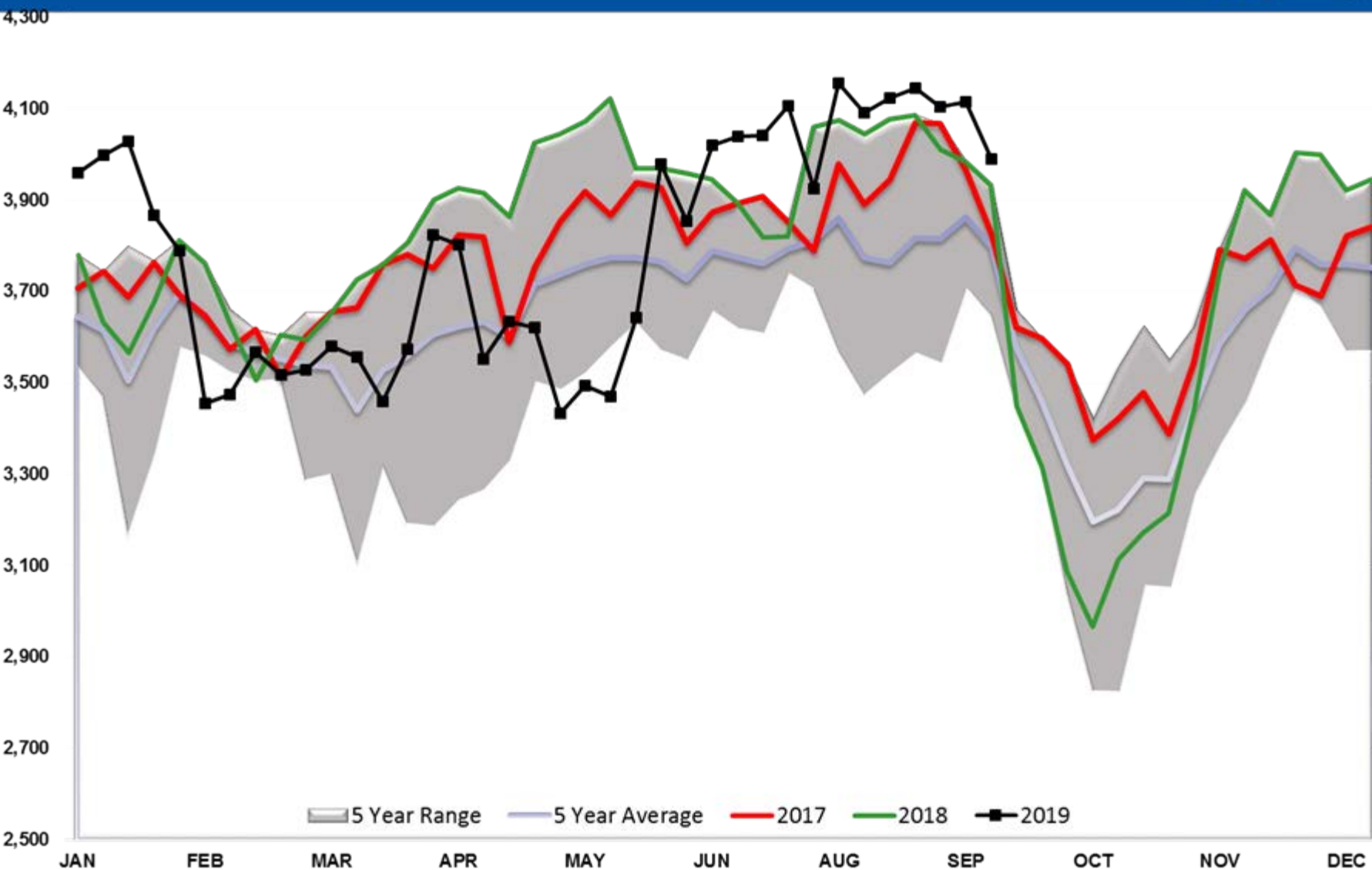
# Refinery Thruput TOTAL US



# Refinery Thruput PADD 1

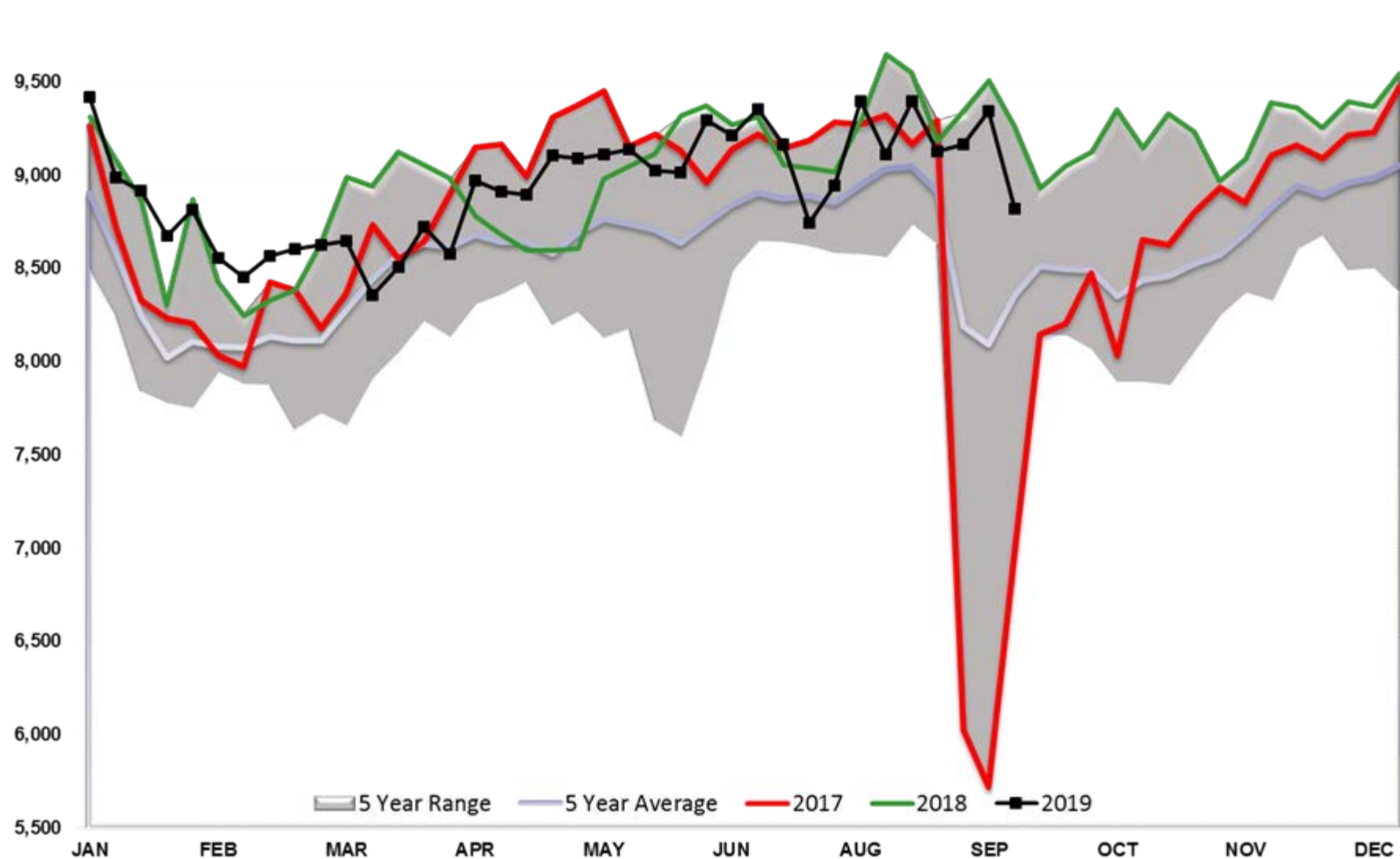


# Refinery Thruput PADD 2

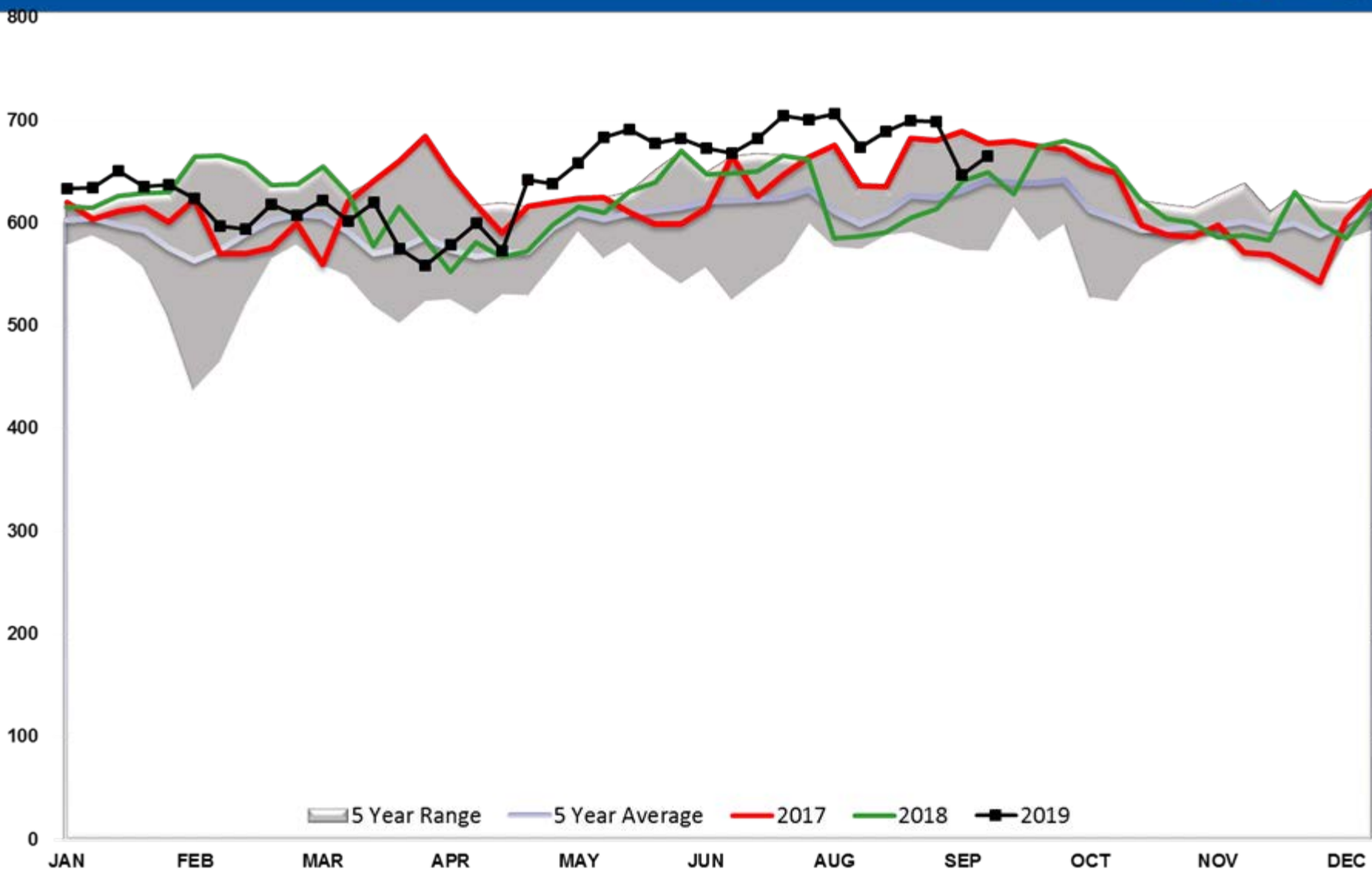


# Refinery Thruput PADD 3

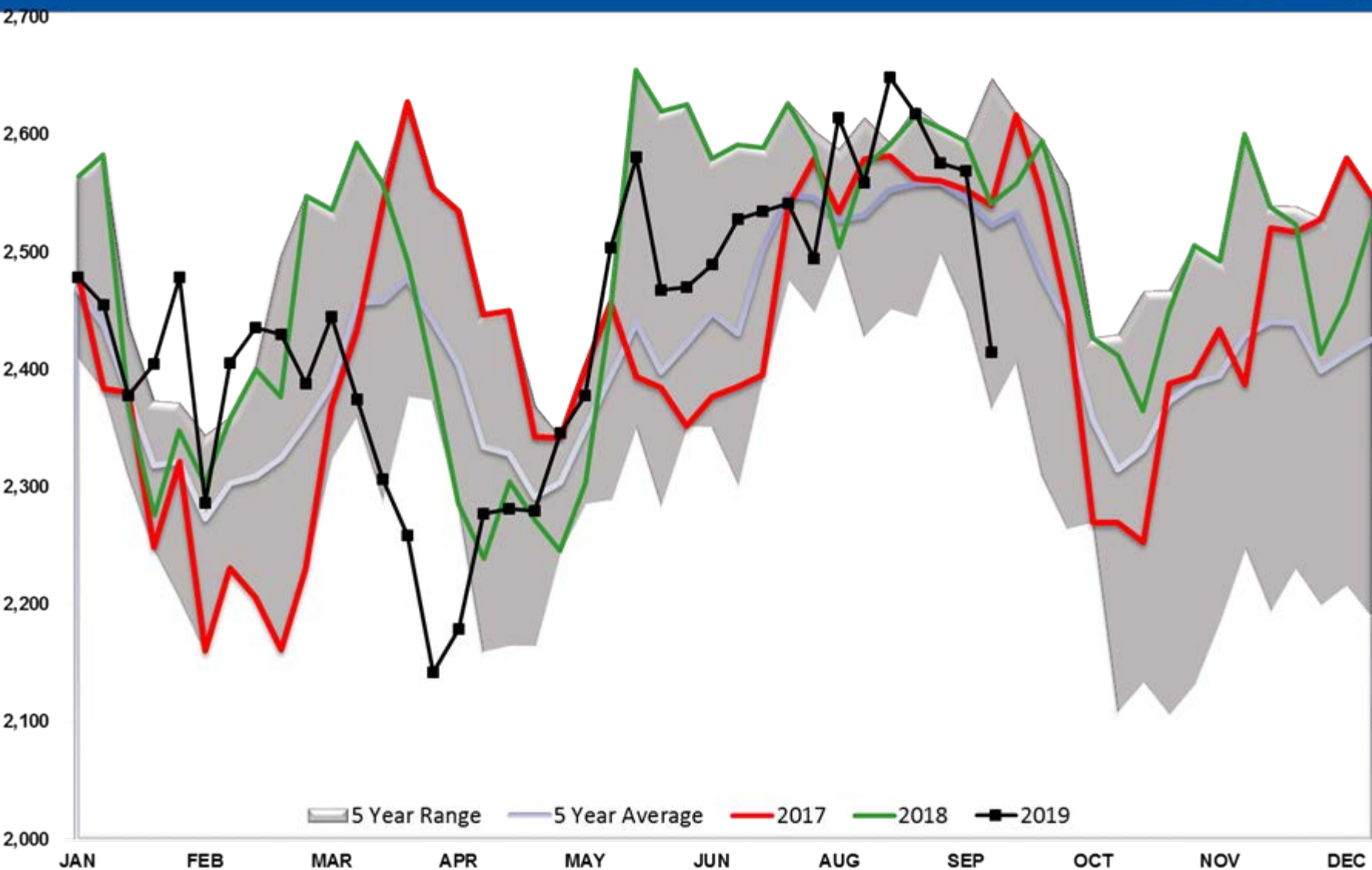
10,000



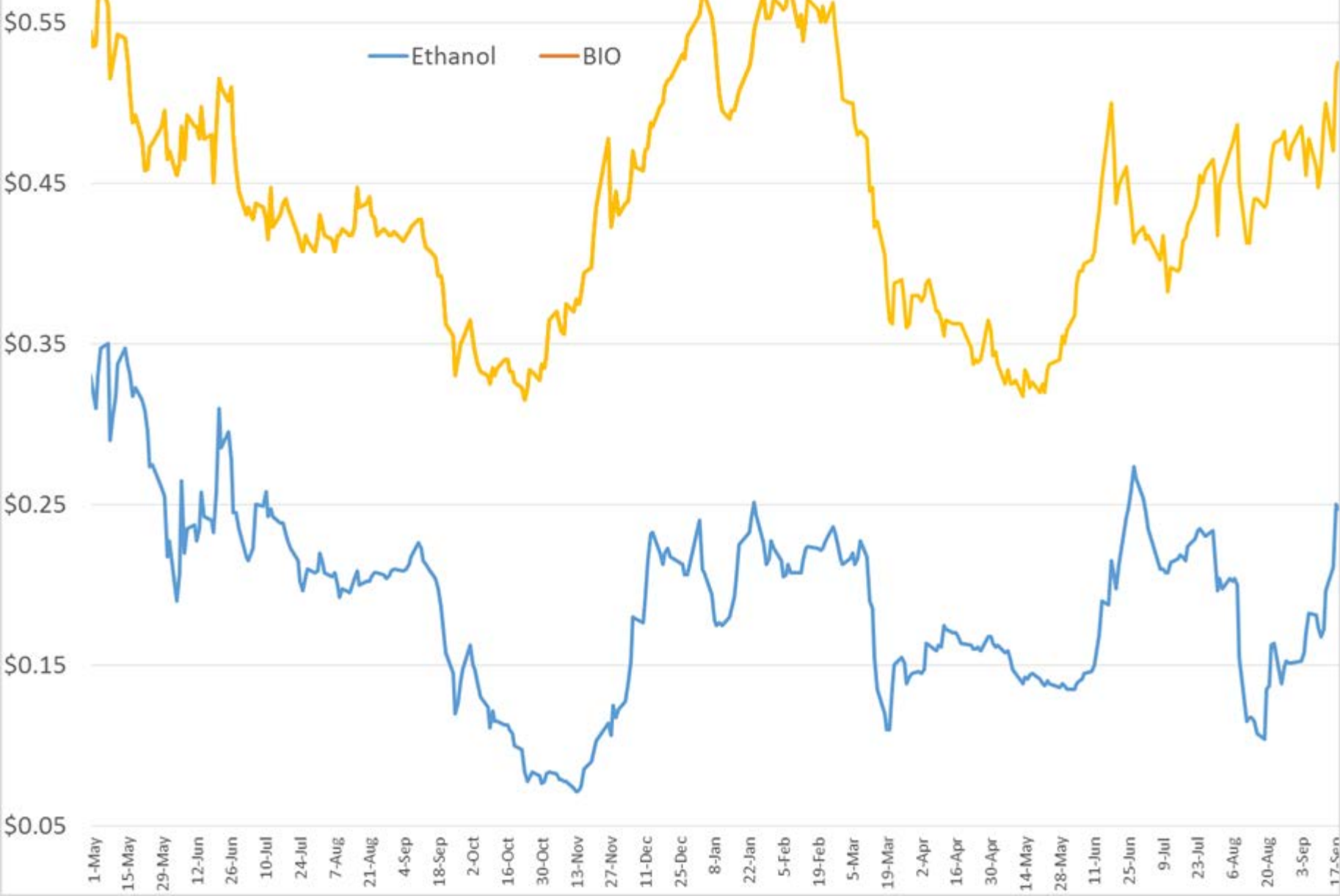
# Refinery Thruput PADD 4



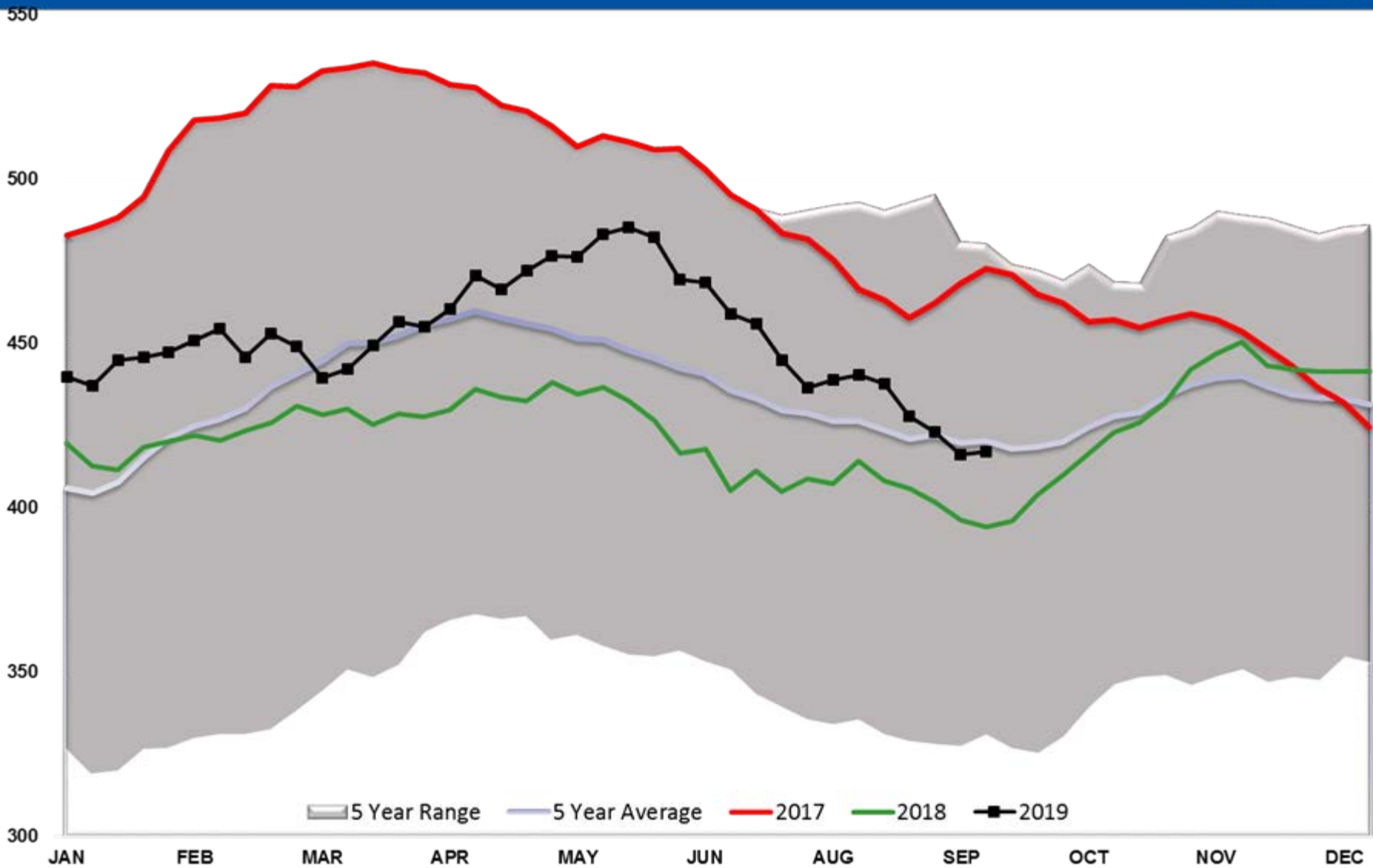
# Refinery Thruput PADD 5



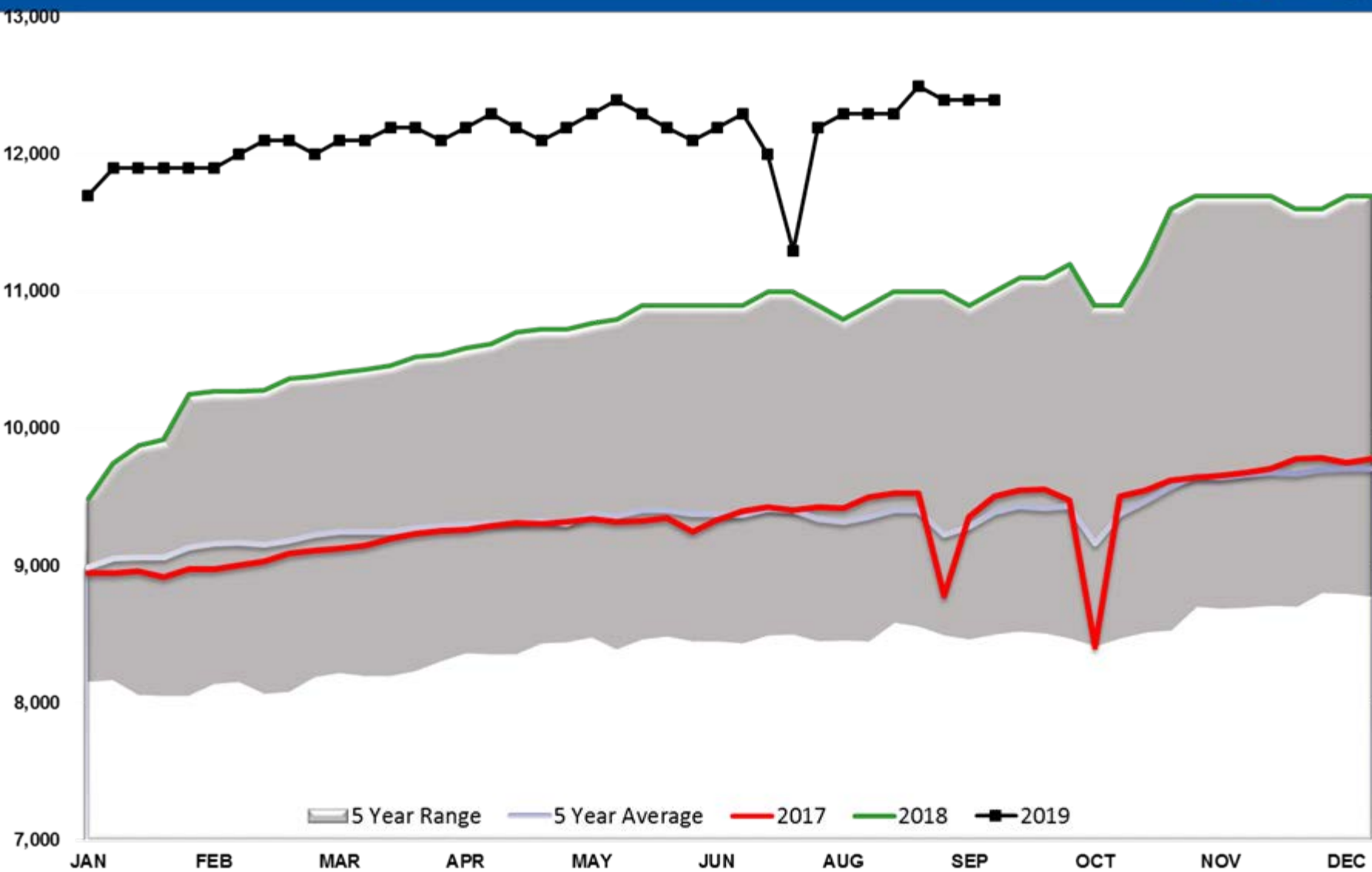
# Current Year RIN Values



# Crude Stocks TOTAL US



# Crude Output



# Total US Petroleum Demand

23,000

22,000

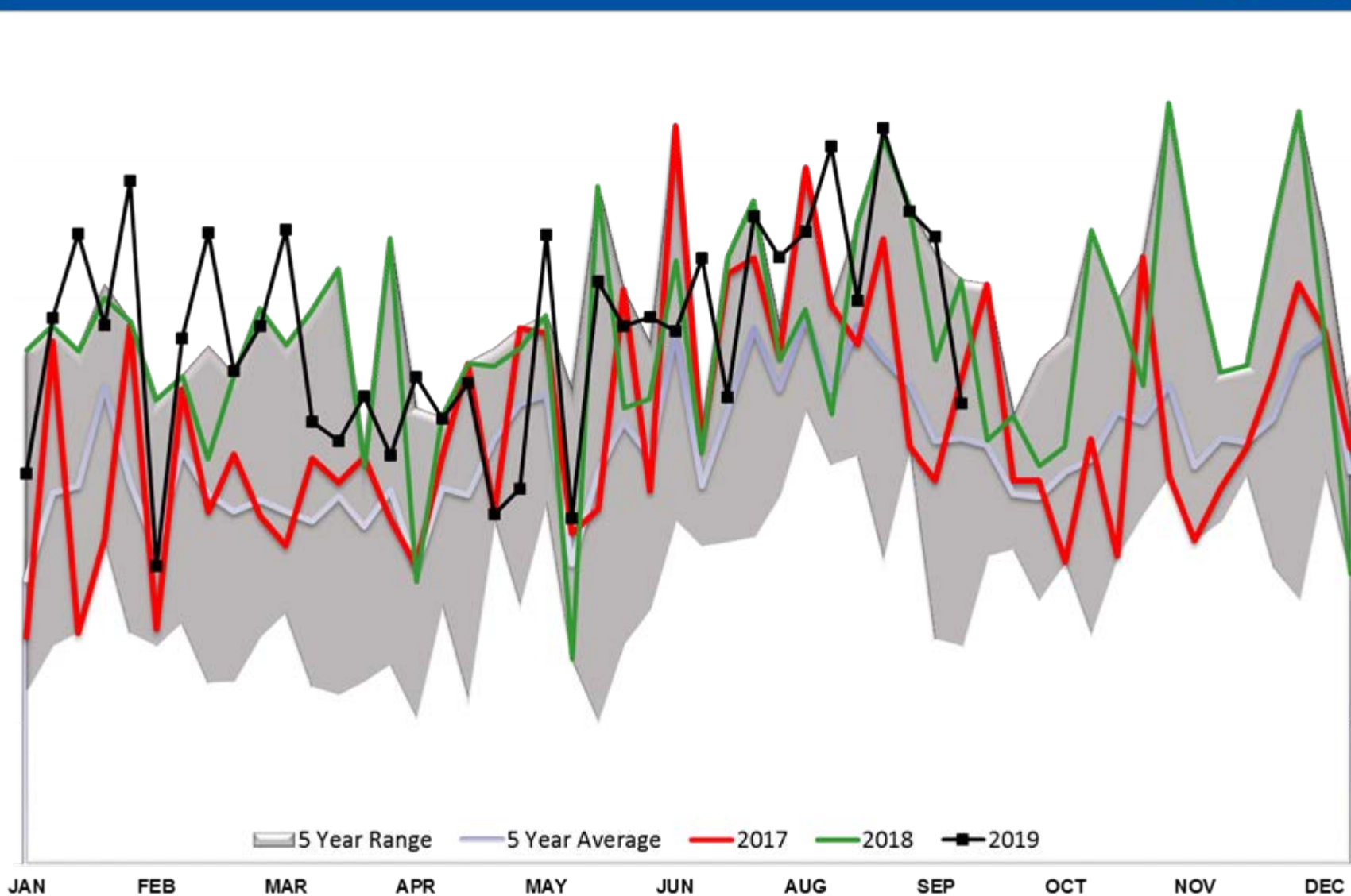
21,000

20,000

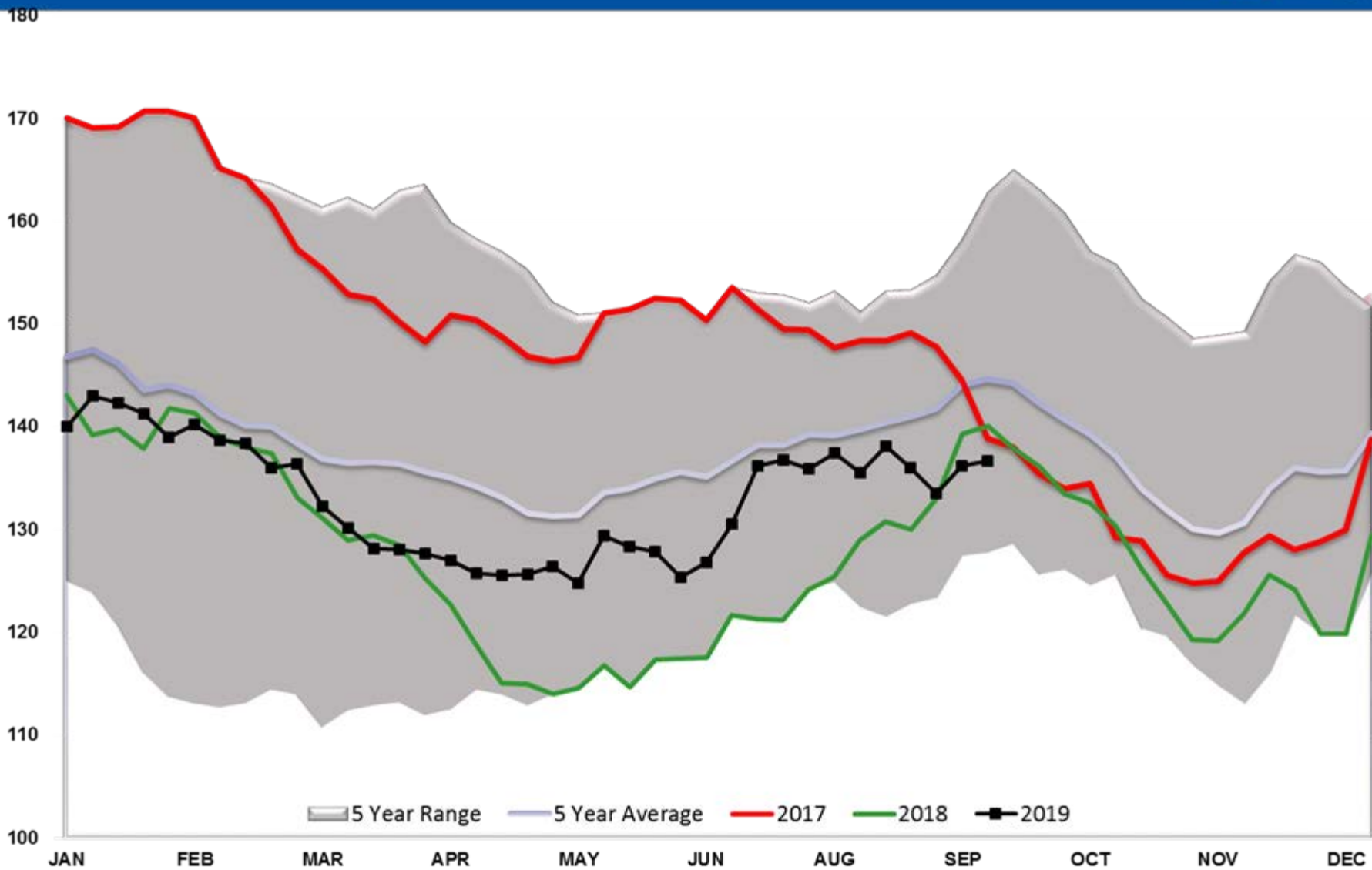
19,000

18,000

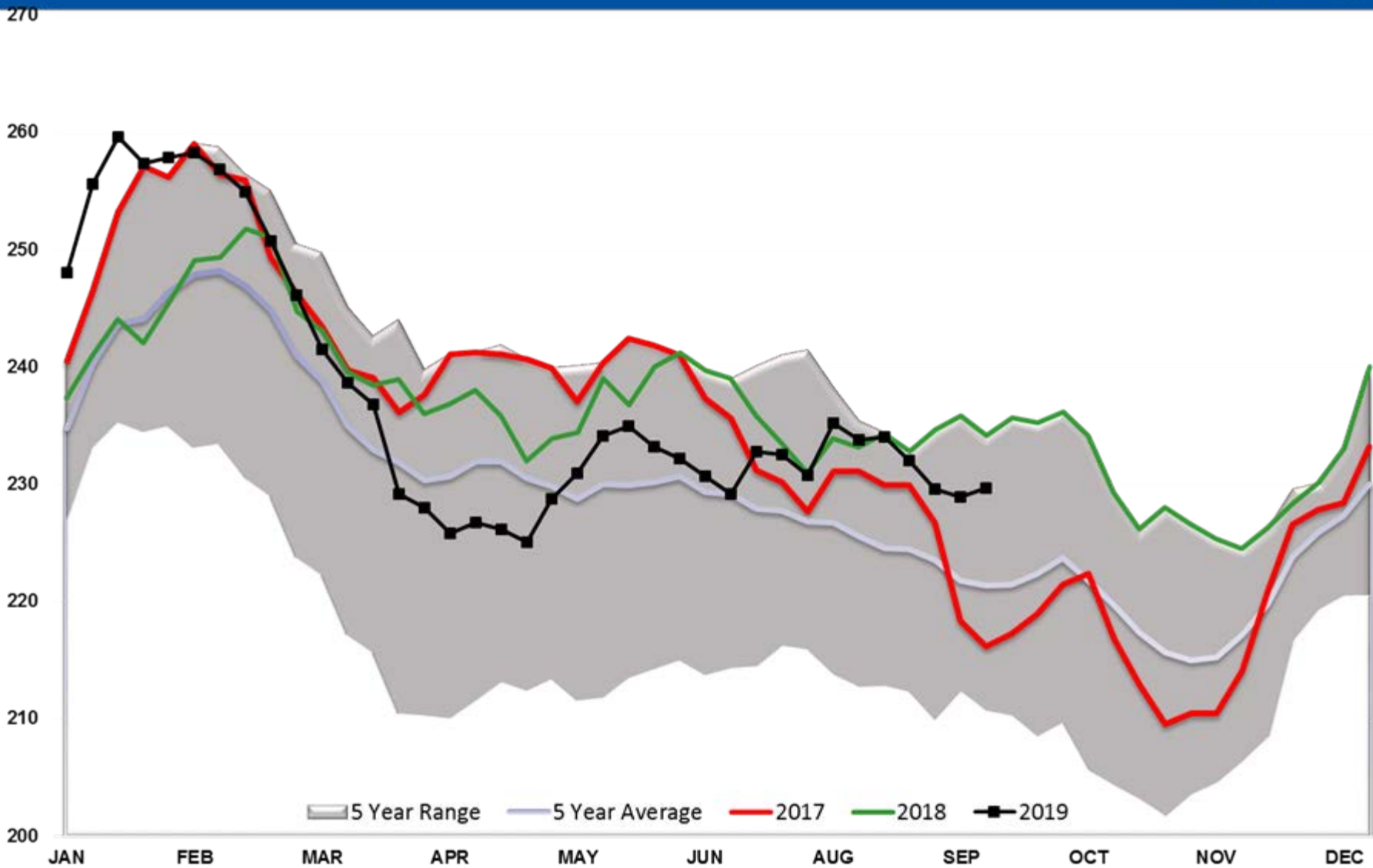
17,000



# Diesel TOTAL US



# Gasoline TOTAL US



# Ethanol Total US

26

24

22

20

18

16

14

12

10

JAN FEB MAR APR MAY JUN AUG SEP OCT NOV DEC

5 Year Range 5 Year Average 2017 2018 2019

